



# WATER PUMP

## PGZA SERIES





## INTRODUCTION

The pumps are suitable for transporting clean water which are non aggressive to stainless steel SUS3034 or SUS316. Single impeller centrifugal pumps with hydraulic components manufactured from SUS3034, Registered with SPAN conform to ISO 9906:2012 Grade 2B and certified by SIRIM.

## Application

Suitable for pressure boosting, water supply, treatment & irrigation, washing and sprinkling, air conditioning system and general water pumping including moderately aggressive liquids.

## Materials :

- Mechanical Seal : NBR/Carbon/Ceramic (Viton On request)
- Impeller : SUS 304
- Shaft : SUS304
- Pump Casing : SUS 304
- Bracket and Motor Casing material : Aluminium

## Technical Data :

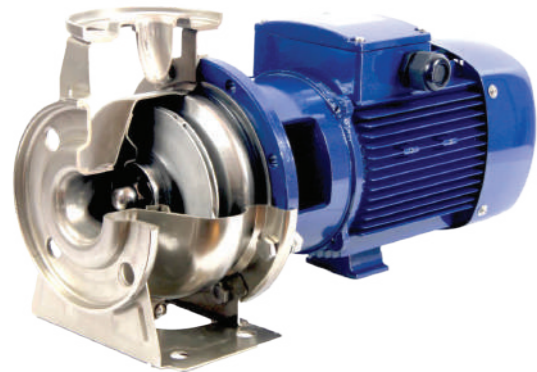
- Maximum working pressure: 10 bar.
- Liquid temperature: -20°C~+80°C (Standard mechanical seal).  
Optional Viton seal (-20°C~+110°C).

## Motor :

- IE2, 2 Pole Induction motor, continuous duty, TEFC, Class F, IP55.
- Single phase: 240V/1ph/50Hz (with thermal protection).
- Three phase: 415V/3ph/50Hz. Ambient
- temperature; -15°C~+40°C.

## Advantages :

- Laser welded pump housing
- Energy Saving (IE2 motor)
- NSK Ball Bearing (Made in Japan)
- Large Water Capacity
- Pump material SUS304 (Anti-rust)



## Accessories

### Stainless Steel output flange

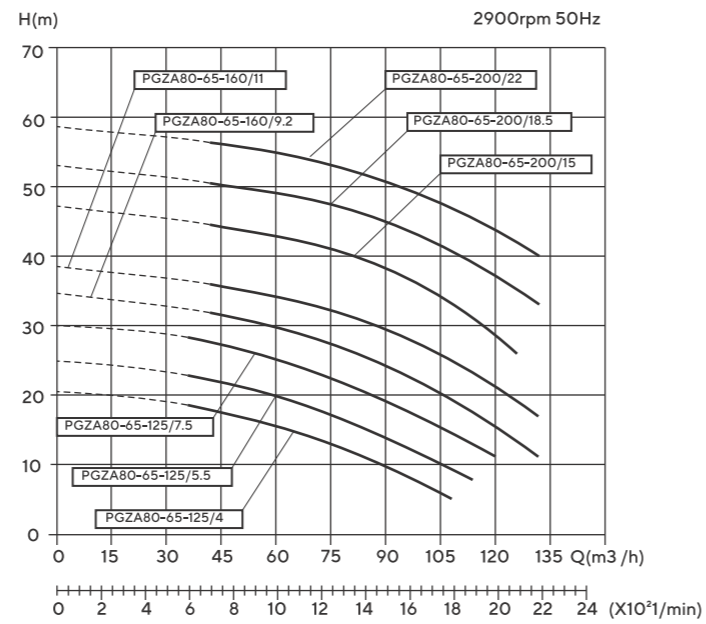
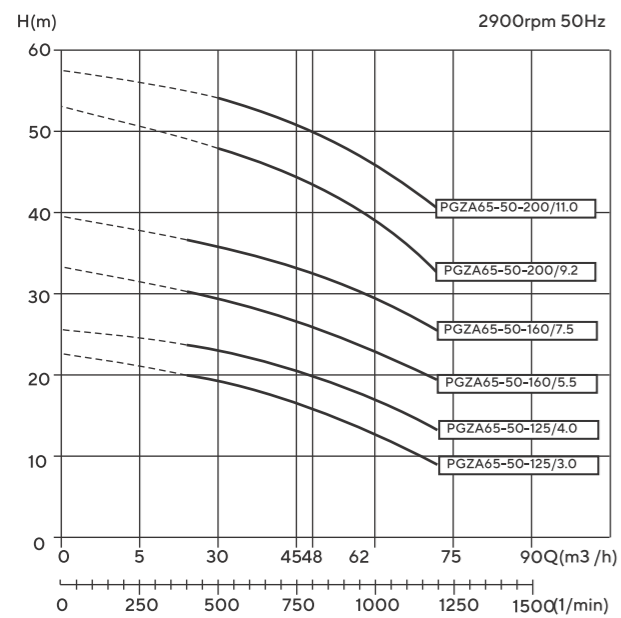
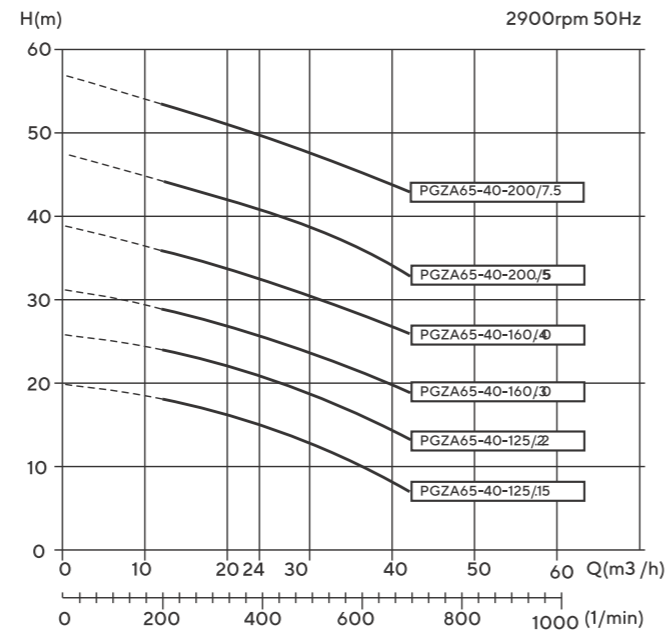
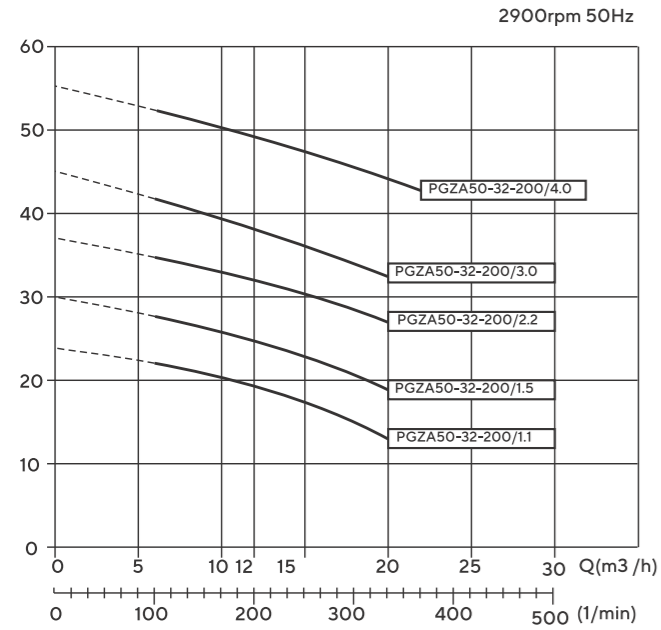


### Screw and nut ; Gasket

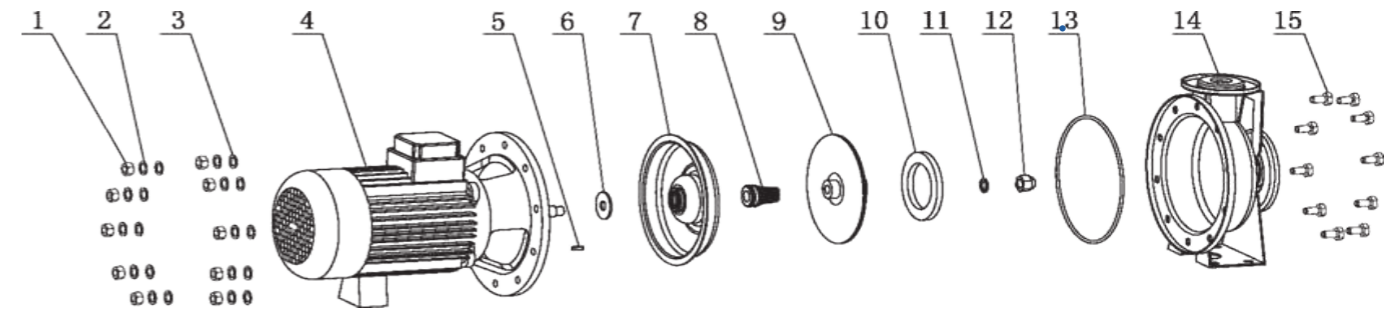




## Performance Curve



## Exploded View

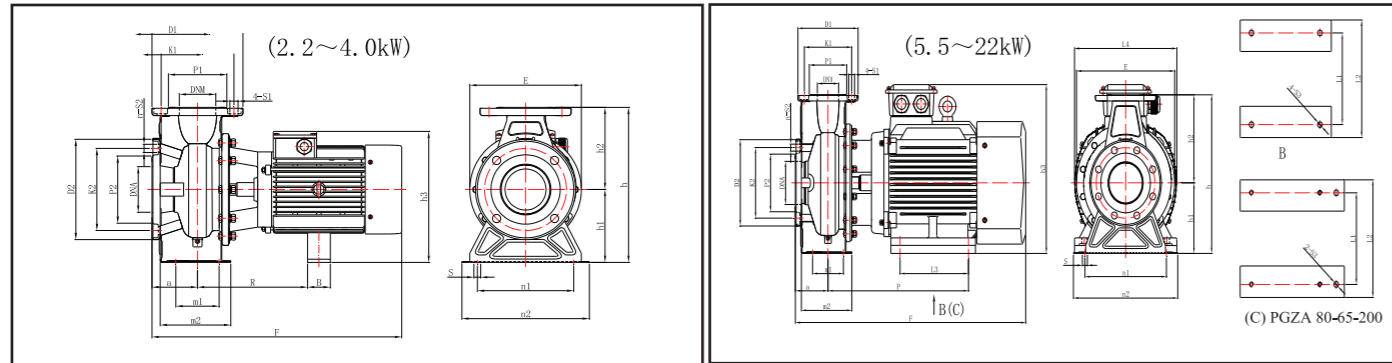


No.	Description	No.	Description	No.	Description
1	Nut	6	"V" Slinger	11	Spring Washer
2	Spring Washer	7	Back Cover	12	Impeller nut
3	Plain Washer	8	Mechanical Seal	13	O Ring
4	Motor	9	Impeller	14	Casing
5	Key	10	Neck Ring	15	Bolt



Stainless Steel close-coupled centrifugal pump

## PGZA Outline Dimension (DINEN 733)



MODEL	E	F	h	h1	h2	h3	a	m1	m2	n1	n2	S	B	R	P	L1	L2	L3	L4	S3	n	D2	K2	P2	S2	D1	K1	P1	S1	DNA	DNM
PGZA 50-32-125/1.1(DIN)	209	478	252	112	140	222	80	70	122	140	190	15	43	223	\	\	\	\	\	\	4	165	125	99	18	140	100	76	18	50	32
PGZA 50-32-160/1.5(DIN)	244	493	292	132	160	253	80	70	123	190	240	15	43	223	\	\	\	\	\	\	4	165	125	99	18	140	100	76	18	50	32
PGZA 50-32-160/2.2(DIN)	244	493	292	132	160	253	80	70	123	190	240	15	43	223	\	\	\	\	\	\	4	165	125	99	18	140	100	76	18	50	32
PGZA 50-32-200/3.0(DIN)	295	518	340	160	180	288	80	70	124	190	240	15	50	231	\	\	\	\	\	\	4	165	125	99	18	140	100	76	18	50	32
PGZA 50-32-200/4.0(DIN)	295	518	340	160	180	288	80	70	124	190	240	15	50	231	\	\	\	\	\	\	4	165	125	99	18	140	100	76	18	50	32
PGZA 65-40-125/1.5(DIN)	209	478	252	112	140	233	80	70	121	160	210	15	43	223	\	\	\	\	\	\	4	185	145	118	18	150	110	84	18	65	40
PGZA 65-40-125/2.2(DIN)	209	478	252	112	140	233	80	70	121	160	210	15	43	223	\	\	\	\	\	\	4	185	145	118	18	150	110	84	18	65	40
PGZA 65-40-160/3.0(DIN)	244	518	292	132	160	260	80	70	123	190	240	15	50	231	\	\	\	\	\	\	4	185	145	118	18	150	110	84	18	65	40
PGZA 65-40-160/4.0(DIN)	244	518	292	132	160	260	80	70	123	190	240	15	50	231	\	\	\	\	\	\	4	185	145	118	18	150	110	84	18	65	40
PGZA 65-40-200/5.5(DIN)	295	595	340	160	180	329	100	70	146	212	265	15	\	\	342	216	248	140	344	12	4	185	145	118	18	150	110	84	18	65	40
PGZA 65-40-200/7.5(DIN)	295	595	340	160	180	329	100	70	146	212	265	15	\	\	342	216	248	140	344	12	4	185	145	118	18	150	110	84	18	65	40
PGZA 65-50-125/3.0(DIN)	244	547	292	132	160	260	100	70	145	190	240	15	50	241	\	\	\	\	\	\	4	185	145	118	18	165	125	99	18	65	50
PGZA 65-50-125/4.0(DIN)	244	547	292	132	160	260	100	70	145	190	240	15	50	241	\	\	\	\	\	\	4	185	145	118	18	165	125	99	18	65	50
PGZA 65-50-160/5.5(DIN)	244	605	340	160	180	329	100	70	150	212	265	15	\	\	352	216	248	140	344	12	4	185	145	118	18	165	125	99	18	65	50
PGZA 65-50-160/7.5(DIN)	244	605	340	160	180	329	100	70	150	212	265	15	\	\	325	216	248	140	344	12	4	185	145	118	18	165	125	99	18	65	50
PGZA 65-50-200/9.2(DIN)	295	605	360	160	200	329	100	70	146	212	265	15	\	\	349	216	248	140	344	12	4	185	145	118	18	165	125	99	18	80	50
PGZA 65-50-200/11(DIN)	295	690	360	160	200	412	100	70	146	212	265	15	\	\	426	254	314	210	314	15	4	185	145	118	18	165	125	99	18	80	50
PGZA 80-65-125/4.0(DIN)	245	548	340	160	180	310	100	95	155	212	280	15	50	244	\	\	\	\	\	\	4	185	145	118	18	150	110	84	18	80	65
PGZA 80-65-125/5.5(DIN)	245	604	340	160	180	327	100	95	155	212	280	15	\	\	354	216	248	140	344	12	4	200	160	132	18	185	145	118	18	80	65
PGZA 80-65-125/7.5(DIN)	245	604	340	160	180	327	100	95	155	212	280	15	\	\	354	216	248	140	344	12	4	200	160	132	18	185	145	118	18	80	65
PGZA 80-65-160/9.2(DIN)	301	606	360	160	200	327	100	95	155	212	280	15	\	\	356	216	248	140	344	12	4	200	160	132	18	185	145	118	18	80	65
PGZA 80-65-160/11(DIN)	301	688	360	160	200	412	100	95	155	212	280	15	\	\	433	254	314	210	314	15	4	200	160	132	18	185	145	118	18	80	65
PGZA 80-65-200/15(DIN)	301	688	405	180	225	432	100	95	155	250	320	15	\	\	483	245	314	\	314	15	4	200	160	132	18	185	145	118	18	80	65
PGZA 80-65-200/18.5(DIN)	301	732	405	180	225	432	100	95	155	250	320	15	\	\	527	254	314	\	314	15	4	200	160	132	18	185	145	118	18	80	65
PGZA 80-65-200/22(DIN)	301	732	405	180	225	432	100	95	155	250	320	15	\	\	527	254	314	\	314	15	4	200	160	132	18	185	145	118	18	80	65

## PGZA Performance Data

Model (EN733)	(A)	Power		Capacity																											
				l/min	0	100	150	200	300	333	360	400	450	500	600	700	800	1000	1200												
		kW	HP	m <sup>3</sup> /h	0	6.0	9.0	12	18	20	22	24	27	30	36	42	48	60	72												
				Head(m)																											
PGZA 50-32-125/1.1	2.5	1.1	1.5		24	21.5	20.5	19.5	16	13																					
PGZA 50-32-160/1.5	3.29	1.5	2.0		29.5	27	26	25	21	18																					
PGZA 50-32-160/2.2	4.58	2.2	3.0		37	33.5	32.5	32	28.5	27																					
PGZA 50-32-200/3.0	5.83	3.0	4.0		45	41	40	38	34	32																					
PGZA 50-32-200/4.0	7.9	4.0	5.5		55	51	50	49	46	45	43																				
PGZA 65-40-125/1.5	3.5	1.5	2.0		20			19	18	17	16.5	15	14	12.5	10	7															
PGZA 65-40-125/2.2	4.58	2.2	3.0		26			23.5	22.5	22	21.5	21	20.5	19.5	16.5	13															
PGZA 65-40-160/3.0	5.83	3.0	4.0		31			29	27.5	27	26.5	25.5	25	24	22	19															
PGZA 65-40-160/4.0	7.9	4.0	5.5		39			35.5	34.5	34	33.5	32.5	32	31	29	26															
PGZA 65-40-200/5.5	10.8	5.5	7.5		47			43	42.5	42	41.5	41	40.5	39	37	33															
PGZA 65-40-200/7.5	14.9	7.5	10.0		57			53	52.5	52	51	50	49	48	46.5	44.5															
PGZA 65-50-125/3.0	5.83	3.0	4.0		22.5							20	19.5	19	18.5	17.5	16	13	9												
PGZA 65-50-125/4.0	7.9	4.0	5.5		25.5							23	22.5	22	21.5	20.5	20	17	13.5												
PGZA 65-50-160/5.5	10.8	5.5	7.5		33							29.5	29	28.5	28	27	26	24	20												
PGZA 65-50-160/7.5	14.9	7.5	10.0		39							36	35	34.5	34	33.5	32.5	29	24												
PGZA 65-50-200/9.2	18.8	9.2	12.5		53									47	46.5	45	43.5	39	32												
PGZA 65-50-200/11	21.1	11.0	15.0		57.5										52	51	50.5	50	47	41											

Model (EN733)	(A)	Power		Capacity																											
				l/min	600	650	700	800	1000	1200	1500	1800	1900	2000	2100	2200															
		kW	HP	m <sup>3</sup> /h	36	39	42	48	60	72	90	108	114	120	126	132															
				Head(m)																											
PGZA 80-65-125/4.0	7.9	4.0	5.5		18	17.5	17	16	14	11.5	8	4.5																			
PGZA 80-65-125/5.5	10.8	5.5	7.5		22.5	22	21.5	20.5	18.5	16	12.5	8.5	7																		
PGZA 80-65-125/7.5	14.9	7.5	10		27.5	27	26.5	26	24	21.5	18	14	12	10.5																	
PGZA 80-65-160/9.2	18.8	9.2	12.5					31	30	28	26	23	18	16	14.5	13															
PGZA 80-65-160/11	21.1	11	15					36	35	33	31	28	23	21	19.5	18	16.5														
PGZA 80-65-200/15.0	28.9	15	20					44	43	41	39	36	32	30	28	26	23														