

工機傳動設備(上海)有限公司
KOKI Transmissions(Shanghai)Co.,Ltd.
E-MAIL : info@gongjdrive.com
http://www.gongjdrive.com

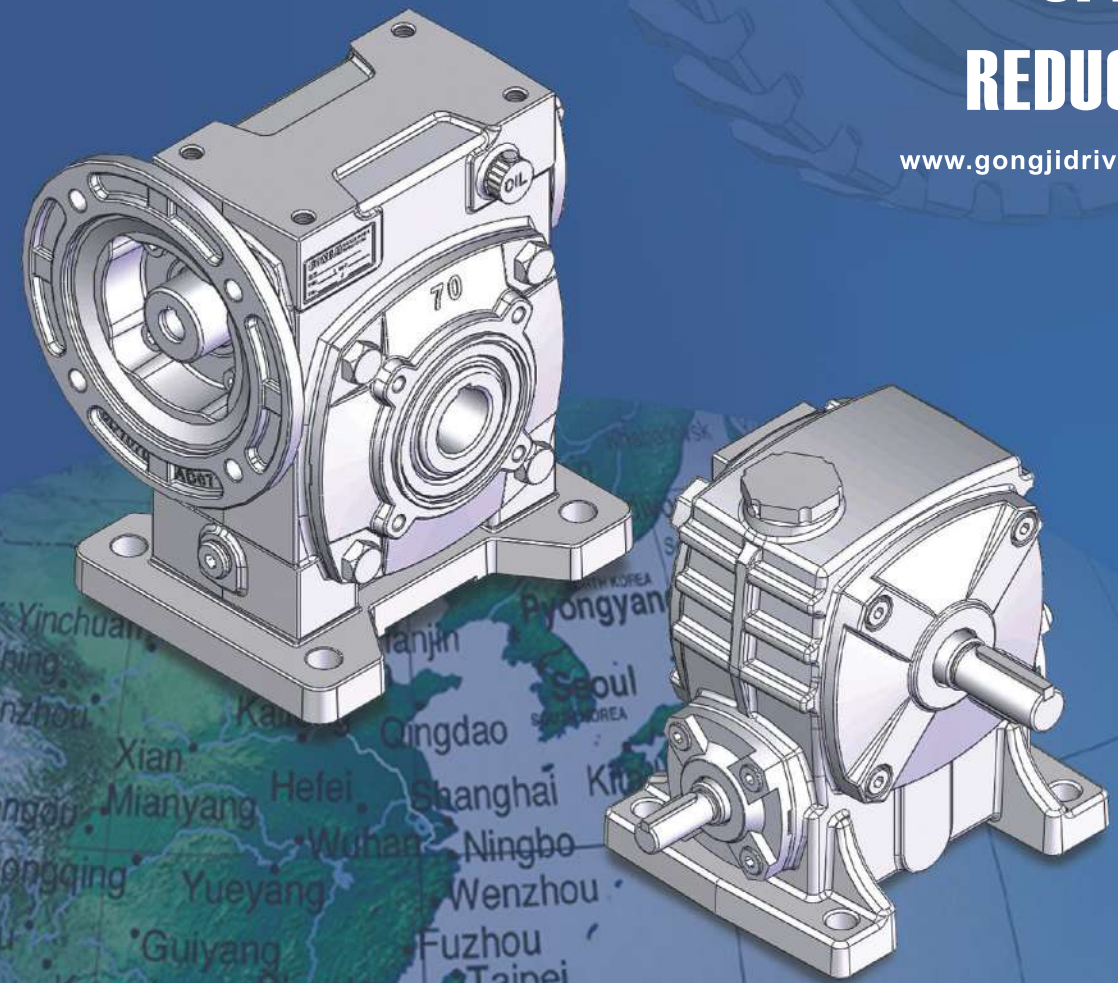
本公司保留可對目錄內容設計變更的權利
Gong Ji have the right to modify catalogue without prior notice .

台灣工機廠股份有限公司
Taiwan Gong Ji Chang Co., Ltd.
E-MAIL : info@gongjdrive.com
http://www.gongjdrive.com

TGW-A05,10,10,5000

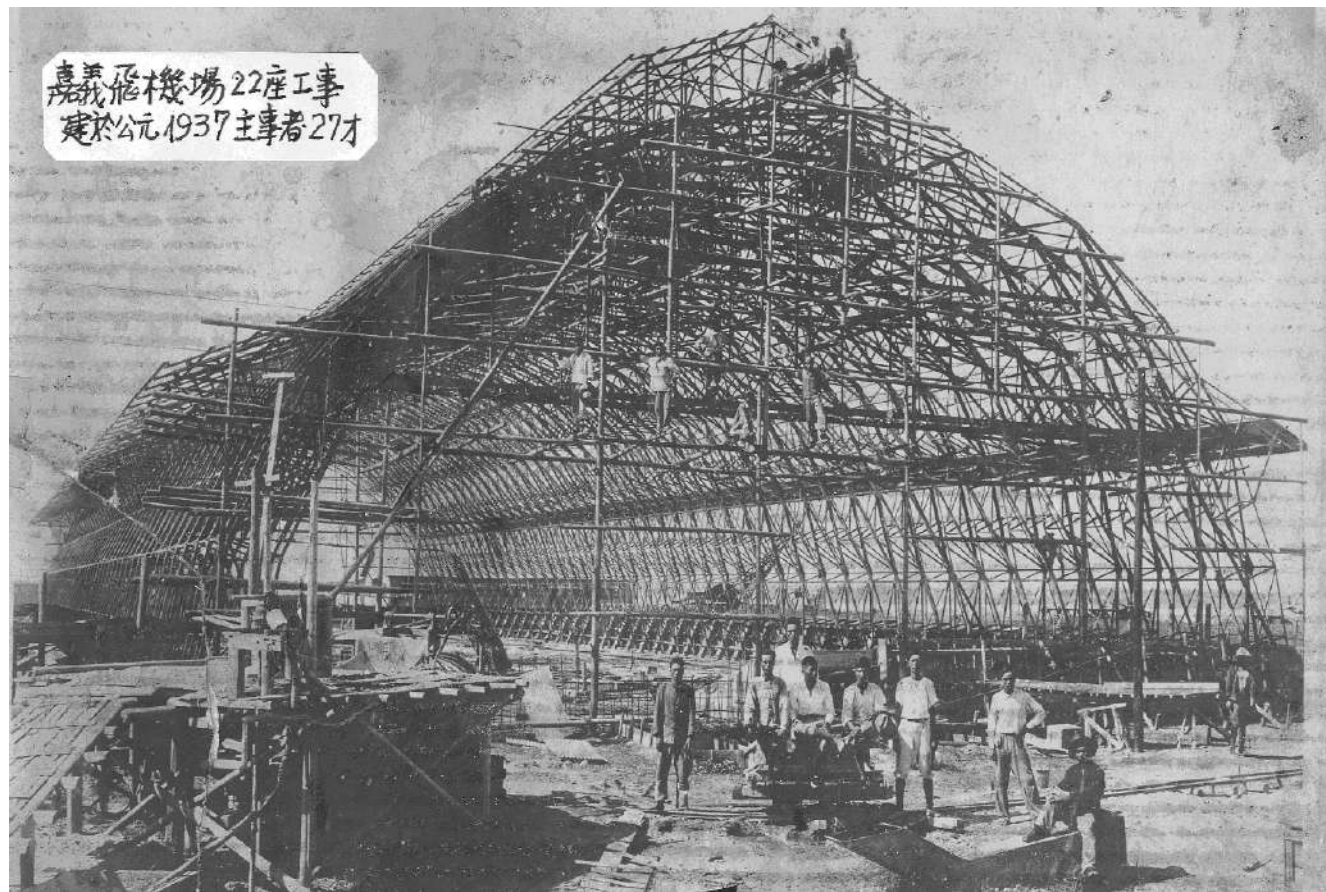
**WORM
GEAR
SPEED
REDUCER**

www.gongjdrive.com



ISO 9001:2008

(一) 嘉義機場機棚工程



(二) 水泥輸送機製造



TK/BH 型蝸輪減速機目錄

TKA(P07)	TKB(P08)	TKV(P09)	TKJ(P10)
TKAE(P11)	TKBE(P12)	TKVE(P13)	TKJE(P14)
TKVQ(P15)	TKJQ(P16)	TKVEQ(P17)	TKJEQ(P18)
TKBW(P19)	TKVW(P20)	TKBWE(P21)	TKVWE(P22)
TKAR(P23)			

重要組件說明.....	02
機型選定要件	
標準生產減速比.....	03
懸垂荷重O.H.L.	
蝸桿及蝸輪傳動方向	
潤滑油選定	
蝸輪組件自鎖功能.....	04
計算公式	
安全(荷重)係數	
安全係數速選表	
概略傳動效率表.....	05
範例1~3.....	05~06
實際減速比.....	06
減速機安裝位置	
TK系列尺寸表.....	07~23
B5/B14入力法蘭.....	24~25
單/雙段直結型馬力配比表.....	25
特性表-單段實心入力軸.....	26~31
零件規格.....	32
單/雙段蝸輪減速機分解圖.....	33~34
BH系列尺寸表.....	35~58
相關系列產品.....	59

TK/BH WORM REDUCER CONTENT

Parts details.....	02
How to choose	
Standard Reduction Ratio.....	03
Over Hung Load	
Transmission direction of worm set	
Lubricant	
Irreversibility for worm set.....	04
Formular	
Safety (Load)factors	
Service factor selection table	
Reference efficiency table.....	05
Example 1~3.....	05~06
Actual ratio.....	06
Worm reducer assembly application	
TK Series dimensions.....	07~23
B5/B14 Input Flange.....	24~25
Single/Double reduction rating.....	25
Ratings for solid input shaft.....	26~31
Parts Specification.....	32
Single/Double reduction spare parts.....	33~34
BH Series dimensions.....	35~58
Family products.....	59

BH(P35)	BHA(P36)	BHB(P37)	BHV(P38)	BHE(P39)
BHAQ(P40)	BHBE(P41)	BHVE(P42)	BHQ(P43)	BHAQ(P44)
BHBQ(P45)	BHVQ(P46)	BHEQ(P47)	BHAQ(P48)	BHBEQ(P49)
BHVEQ(P50)	BHEQM(P51)	BHEQF(P52)	BHW(P53)	BHWQ(P54)
BHWQ(P54)	BHWQ(P54)	BHWQ(P54)	BHWQ(P54)	
BHWQ(P54)	BHWQ(P54)	BHWQ(P54)	BHWQ(P54)	

為提供符合各產業傳動的需求,本公司不斷投入大量研發工程師及機械設備,得以研發改良蝸輪減速機以良好的材質加上的熱處理及精細研磨加工而成,能達到最佳圓滑的運轉功能,其外型美觀,高效率,體型小,重量輕,低噪音,壽命長,不易逆轉...等優點,故所製造的蝸輪減速機不論內銷或外銷皆能符合國際水準,相信搭配貴公司機械能做到最大的貢獻。

In order to meet the needs of various industrial applications, Gong Ji has developed a series of worm gear reducers that matched international standards. With quality raw materials, experienced heat treatment as well as state of the art CNC precision grinding of the teeth of worm shafts, we can ensure smooth and efficient turning as well as long service life. Very quiet and compact. Light weight and elegant appearance. We trust it can contribute a lot to your operations.

(A) 重要組件說明

本體:採用一體鑄造成型,有極高的剛性,可承受強大的衝擊力,外部美觀且附散熱片設計,具較佳的散熱效果,內部採自動

潤滑油導流槽設計,能充份達到潤滑蝸桿/蝸輪及軸承的目的,80型以下採用FC20材質,100型以上採用FC23材質。

蝸桿:採用中碳鋼S45C經高週波熱處理淬火硬化,齒面硬度達HRC45°。再經精密CNC蝸桿磨床精細研磨,品質穩定,精度

高,牙面研磨粗度達Ra0.8,有極高的韌性,亦可採用SCM21 鈹鉻鋼材質,經滲碳硬化熱處理至RC60°。可大幅增加耐磨性,使用壽命更長。

蝸輪:採用鋁青銅ALBC2材質,再以專用滾齒刀具及精密CNC滾齒機滾製而成,可承受強大衝擊力。

軸承:採用高剛性滾珠軸承及圓錐滾柱軸承,對軸向及徑向的負載,均能充分的發揮。

潤滑油:採用礦物性齒輪潤滑油,可提高傳動效率,延長使用壽命及降低運轉溫度,出廠時所有減速機皆已裝入齒輪潤滑油,亦可視需要選用合成機油(選配件)。

Parts details

Housing : Great rigidity for capable of sustaining severe impacts was obtained by one time casting. Good-looking appearance equipped with cooling fins, which combined with quality lubricating oil, allows good heat dissipation. Material FC20 is used for type 80 and under. Material FC23 is used for type 100 and up.

Bearings : Applying high rigidity ball bearings and tapered roller bearings enable the unit to sustain both horizontal and vertical (lateral and axial) loads to the highest degree.

Worm shaft : The worm shaft is made by one solid piece of carbon alloyed steel. The worm teeth are cut before induction hardening or carbonized to HRC45° or HRC60° . After heat treatment, the worm teeth are ground by state of the art precision CNC grinder to ensure maximum contact with the worm wheel and to increase load-carrying capacity, both in impact and continuous modes.

Worm wheel : Worm wheel are made by special high strength bronze alloy(ALBC2). The teeth are cut by precision CNC hobbing machines.They are designed to sustain high impact.

(B) 機型選定要件

如欲正確地選擇蝸輪減速機,請參照以下說明:

1. 入力軸回轉速:以聯軸器直結或皮帶輪等傳動時,最高入力轉數為2000 rpm,而600~1800 rpm較適合一般性場合使用。
2. 出力軸回轉速:可依入力回轉速及減速比計算出,出力軸回轉數 = 入力軸回轉數 × 減速比,如入力回轉速特別低時,其效率及扭力均會降低且軸承給油潤滑亦較為困難,需特別注意選擇型號與潤滑油並請直接與本廠業務部聯絡。

How to choose

To choose the right "GONG JI" worm gear speed reducers, please check the following parameters:

1. Input shaft rpm : when driven with shaft coupling or belt, the maximum rpm may be up to 2000. However, rpm from 600-1800 is recommended.
2. Output shaft rpm : it can be calculated by the rpm of the input shaft and the speed reduction ratio. rpm of output shaft = rpm of input shaft × speed reduction ratio Special attention should be given when very low speed is required due to lower efficiency and torque. It is also more difficult for the gear to be properly lubricated. Please contact the manufacturer to choose the right model as well as the right lubrication oil.

(C) 標準生產減速比 Standard Reduction Ratio

1. 單段蝸輪 : 1/5, 1/10, 1/15, 1/20, 1/30, 1/40, 1/50, 1/60.

2. 雙段蝸輪 : 1/100, 1/200, 1/300, 1/400, 1/500, 1/600, 1/800, 1/900.

如有需求特殊減速比時,請與本公司業務部聯絡。

TG'S standard ratio for worm gear reducer.

Single reduction : 1/5, 1/10, 1/15, 1/20, 1/30, 1/40, 1/50, 1/60.

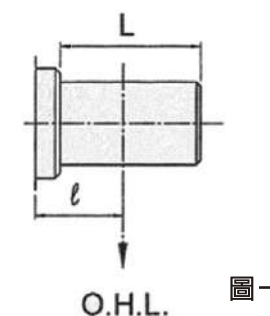
Double reduction (Worm/Worm) : 1/100, 1/200, 1/300, 1/400, 1/500, 1/600, 1/800, 1/900.

Please contact TG's sales department for special ratio requirement .

(D) 懸垂荷重 Over Hung Load.

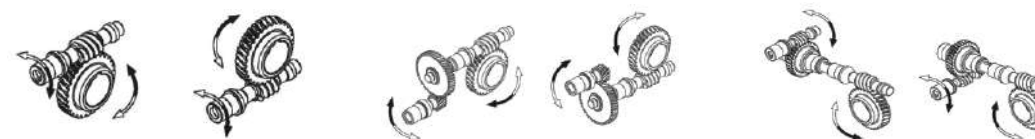
減速機的出力軸彎曲與外殼破裂均與懸垂荷重有關,因此要選定減速機時,必須考慮懸垂荷重容許值依據出力軸L/2處尺寸為計算荷重.(參特性表)

All output shaft bending and housing broken are related with overhung loads . Overhung loads were calculated by middle position of output shaft . (Ref performance above table)



(E) 蝸桿及蝸輪傳動方向 Transmission direction of worm set and gear set .

1. 單段蝸輪方向 Single reduction
2. 齒輪/蝸輪方向 Gear/Worm
3. 雙段蝸輪方向 Worm/Worm



說明: 1. 本公司設計蝸輪及蝸桿皆以右牙為主, Standard design for right hand thread worm set .

2. 若需左牙蝸輪及蝸桿,請洽本公司業務部。

Left hand thread worm set need to contact with sales department .

(F) 潤滑油選定 Lubricant

最初使用300小時後,需更換新潤滑油,其後每2500小時換油一次,採用適當的潤滑油,能充分提供蝸輪與蝸桿表面傳動所需的潤滑性,於高負荷或衝擊負荷時,亦能確保高效率及壽命運轉。

以下為減速機潤滑油之選定表。

Please replacement lubricant After first 300 hrs. operation and do the same for every 2500 hrs. Proper lubricant can sufficient support worm set contact surface lubrication. Ensure longlife running and better efficiency for heavy duty and impact application .

荷重Load	周圍溫度Ambient Temp	中國石油	SHELL OIL	MOBIL OIL	ESSO OIL
普通荷重 Normal load	-20°C ~ 10°C	HD-150	Omala oil R150	Mobil gear 629	Spartan EP 150
	-0°C ~ 25°C	HD-220	Omala oil R220	Mobil gear 630	Spartan EP 220
	10°C ~ 40°C	HD-320	Omala oil R320	Mobil gear 632	Spartan EP 320
重荷重 Heavy load	40°C ~ 65°C	HD-460	Omala oil R460	Mobil gear 634	Spartan EP 460
	-0°C ~ 25°C	HD-320	Omala oil R320	Mobil gear 632	Spartan EP 320
	10°C ~ 40°C	HD-460	Omala oil R460	Mobil gear 634	Spartan EP 460
	40°C ~ 65°C	HD-680	Omala oil R680	Mobil gear 636	Spartan EP 680

在高速,高溫,低速,重荷重及強制潤滑等特殊使用場合時,請與本公司業務部聯絡。

Please contact for sales department for special application . Example : high speed,high temperature,low Speed or heavy load.Please contact TG's sales department for Special lubricant requirement .

(G) 蝸輪組件自鎖功能 Irreversibility for worm set

並非所有蝸輪減速機都有自鎖功能,需依照蝸輪減速機不同的螺旋角度,摩擦角,傳動效率,滑動速度及牙面研磨精度...等因素影響,導致蝸輪組件產生不同程度的自鎖功能.

It's not Irreversibility for all worm reducers , irreversibility function according to different factors as : helix angle , friction angle , efficiency , sliding speed , grinding surfac...etc .

螺旋角度 Helix angle	適用減速比 Ratio	備註 Remark
1° ~ 3°	1/60~1/100	幾乎可完全自鎖Almost non-reversing
3° ~ 8°	1/30 ~ 1/50	依負載及震動情況會些許移動 Return in case of loads or vibration
8° ~ 12°	1/15 ~ 1/25	依負載及震動情況會快速移動 Quick return in case of loads or vibration
12° ~ 25°	1/5 ~ 1/20	完全無自鎖功能Quick return

*以上自鎖功能資料僅供參考,為確實達到停止需求時,請務必加裝剎車器為佳.

For safety reason and precision stopped . Please be assemble brake unit onto your motor .

(H) 計算公式 Formular

計算公式Formular	符號說明Symbol	
HP1 = HP2xFs/η	HP1=入力馬力Input HP (HP1)	η =傳動效率Efficiency (%)
HP2 = T2xN2/716.2	HP2=出力馬力Output HP (HP2)	Fs=安全(荷重)係數Safety factor
KW2 =T2xN2/955	KW2=出力馬力Output KW (KW2)	N2=出力軸轉速Output RPM
I = N2/1800	T2=輸出扭矩Output torque (Kgf-m)	V=速度Speed (m/min)
N2 = V/π D	R=半徑Radius (m)	I=減速比Ratio
T2 = WxR	D=直徑Diameter (m)	μ =摩擦係數Friction factor
W = W1xμ	K=連結係數Connecting factor	W1=物件重量Weight (Kg)
(Kgf-m) x 9.8 = (N-m)	W=承受力量Weight (Kgf)	daN-m=達因牛頓-米 Dyna-Newton-meter
(daN-m) x 10 = (N-m)	N-m =牛頓-米Newton-meter	1Kgf-m = 7.233FT-LB
η = (HP2 / HP1) x 100%	1KW=1000W=1.34HP	1Kgf-m=86.8IN-LBS

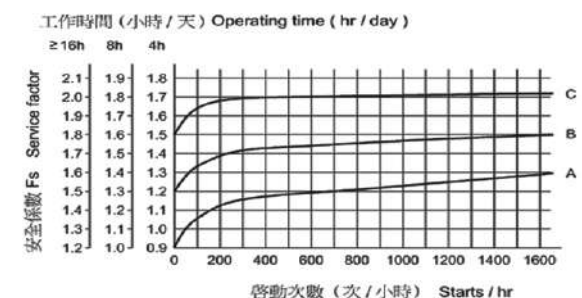
*傳動效率:蝸輪減速機效率是依照齒面角,周節,速度,潤滑方式及周圍溫度決定.

Efficiency : Reducer's efficiency are decided by worm set helix angle,pitch diameter,speed,lubricant And ambience temperature .

(J) 安全(荷重)係數 Safety (Load)factors

運轉衝擊負荷 Impact load grade	等級 Grade	每日運轉時數 Daily operation (Hrs)			
		0.5~1	2~7	8~10	11~24
平順運轉,無衝擊負載 Uniform running load,no shocks	A	0.80	0.90	1.00	1.25
變動運轉,部份衝擊負載 Various running load,medium shocks	B	0.90	1.00	1.25	1.50
運轉環境惡劣,重衝擊負載 Extremely tough application,heavy shocks	C	1.00	1.25	1.50	1.75

安全係數速選表 Service.factor selection table



安全係數Fs=1.0 : 表示減速機在平順運轉及無衝擊負載使用條件下,每日連續運轉8小時及啓動不超過10次/小時.此減速機壽命可以達到10,000工作小時.

Safety factor Fs= 1.0 : Reducer's daily operation for 8 hrs under smoothly running and normal impact conditions . Max 10 Times/hour starts . Then the reducer can be reach to 10,000 hour's working life .

概略傳動效率表 Reference efficiency table

減速比 Ratio	概略傳動效率 Reference efficiency
1/5	90 %
1/10	85 %
1/20	85 %
1/30	80 %
1/40	70 %
1/50	66 %
1/60	63 %
1/80~1/100	52 %

連結係數 Connecting factor (k)

連結元件 Connecting parts	係數 Factor
鏈輪 Sprocket	1.00
齒輪 Gear	1.25
三角皮帶 V - Belt	1.50
平皮帶 Flat Belt	2.50

範例1. (Example 1)

輸送機輸送速度V=14m/min,荷重400Kg,主動鏈輪15T,被動鏈輪30T,滾筒直徑為300mm,每日運轉8小時,均一衝擊負載場合,三相4P感應馬達傳動蝸輪減速機.摩擦係數為 μ = 0.1,減速機傳動效率 η = 0.7.適用TKAE機型.試算使用規格及減速比.

Convey daily operating for 8 hours , normal impact , transmission by worm gear reducer model TKAE with 4P induction motor . speed at 14 m/min , loads 400kgs , drive sprocket 15T , driven sprocket 30T , drum diameter 300mm , friction factor μ = 0.1 , reducer's efficiency η = 0.7 . Please calculate for ratio and specification .

出力軸輸出轉速 Output shaft RPM.

$$\begin{aligned} & (\text{driven sprocket} / \text{drive sprocket}) = (30/15) \\ N2 &= (V / \pi D) \times (30 / 15) \\ &= (14 / 3.14 \times 0.3) \times 2 \\ &= 29.72 \text{ rpm} \end{aligned}$$

減速比 Ratio I = N2 / 1800 = 29.72 / 1800 = 1/60

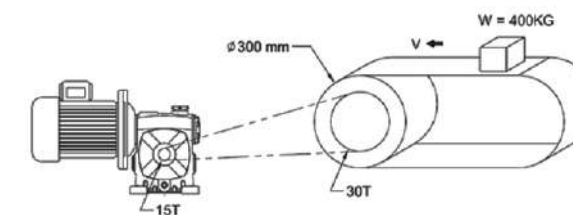
出力軸扭矩 Drum torque T2 = (W x μ) x R
= (400 x 0.1) x 0.15 = 6.0 Kgf-m

輸出馬力 Output capacity = (T2 x N2) / 716.2
= (6 x 29.72) / 716.2 = 0.249 HP

輸入馬力 Input capacity HP1 = HP2 / η = 0.249 / 0.63 = 0.40HP

參考選用機型為 TKAE60-1/60 配裝0.5 HP馬達.

Design model : TKAE60-1/60-D71 (with 1/2 HP-4P motor)



範例2. (Example 2)

滾筒直徑250mm,以36rpm速度吊起一100kg重物,8小時運轉,均一負荷.

入力軸轉數1800rpm,適用TKAE機型.試算使用機型及減速比.

Drum diameter 250mm , At speed 36rpm lifting loads 100kgs . daily operating for 8 hours , normal impact ,input speed 1800rpm . Design model TKAE . Please calculate for ratio and specification .

減速比Ratio I=N2/1800=36/1800=1/50

滾筒扭矩Drum torque T2=WxR=100x0.125=12.5kgf-m

出力馬力Output capacity HP2=T2xN2/716.2=12.5x36/716.2=0.63HP

入力馬力Input capacity HP1=HP2xFs/η=0.63x1.0/0.66=0.95HP

傳動效率Efficiency η = 0.66

荷重係數Load factor Fs=1.0

參考選用機型為TKAE80-50 配裝1HP馬達.

Design model : TKAE80-1/50-D80(with 1 HP-4P motor)



範例3 (Example 3)

已知減速比1/40,負載W=1500kg,轉體直徑300mm.
求其機型大小,條件為8小時運轉,重衝擊,入力軸轉數
1800 rpm摩擦係數 $\mu = 0.1$ 適用TKAE型.

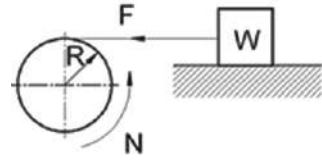
$$F = W \times \mu = 1500 \times 0.1 = 150 \text{kgf}$$

$$T = F \times R = 150 \times 0.15 = 22.5 \text{kg-m}$$

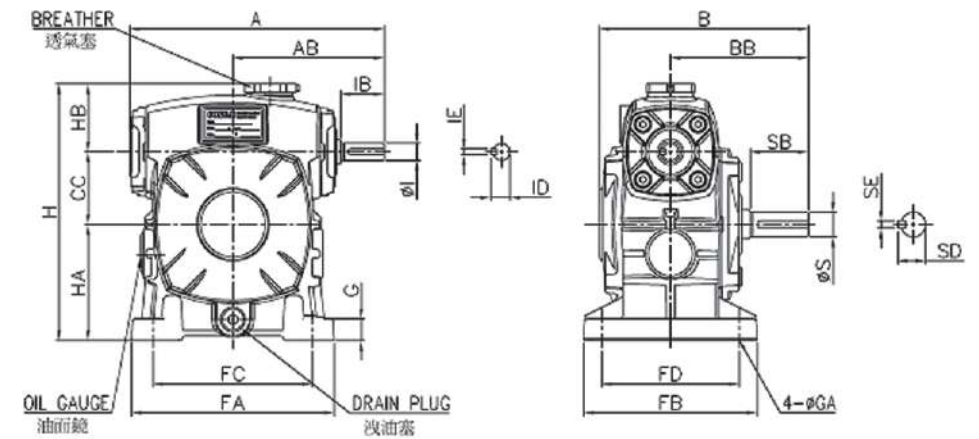
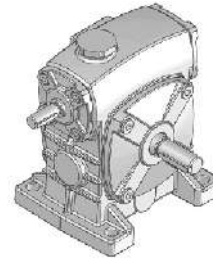
$$N = 1800 \times (1/40) = 45$$

$$\text{HP2} = T \times N / 716.2 = 22.5 \times 45 \div 716.2 = 1.41 \text{HP}$$

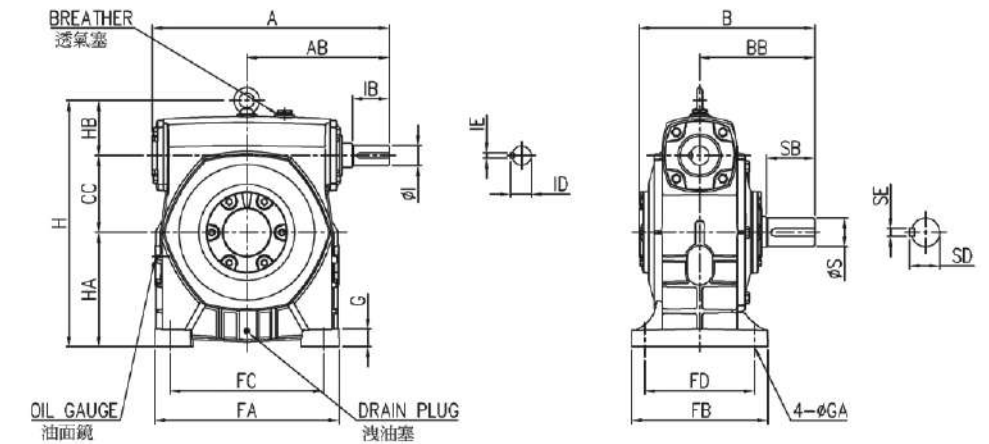
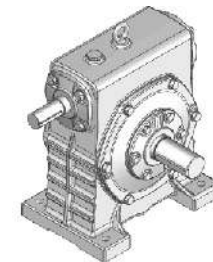
效率 $\eta = 0.7$ 荷重係數 $F_s = 1.5$
減速機容量 $\text{HP1} = \text{HP2} \times F_s / \eta = 1.41 \times 1.5 / 0.7 = 3 \text{HP}$
查特性表選用TKAE120型1/40.



TKA 50~135



TKA 155~175



非整數減速比 Actual ratio

機型 Type	減速比 Ratio		機型 Type	減速比 Ratio		機型 Type	減速比 Ratio	
	公稱 Normal	實際 Actual		公稱 Normal	實際 Actual		公稱 Normal	實際 Actual
100#	1 / 10	1 / 9.75(1/10)	175#	1 / 10	1 / 9.75(1/10)	250#	1 / 10	1 / 10.5
135#	1 / 10	1 / 10.25(1/10)		1 / 15	1 / 15.33(1/15)		1 / 15	1 / 14.67(1/15)
155#	1 / 15	1 / 14.5(1/15)		1 / 60	1 / 58(1/60)		1 / 30	1 / 30.5(1/30)
	1 / 30	1 / 29(1/30)	200#	1 / 10	1 / 9.5	1 / 50	1 / 52(1/50)	

* 未列出減速比規格皆為正減速比. Only above size for decimal fraction ratio.
* ()內為規劃新設計速比,採購前請再行確認. ()Means new design ratio, please confirm before ordering.

減速機安裝位置 Worm reducer assembly application

位置 Position	P1	P2	P3	P4	P5	P6
機型 Type						
TKA						
TKB						
TKV						

● 透氣塞 Breather plug ● 油面鏡 Oil gauge ● 洩油塞 Drain oil plug

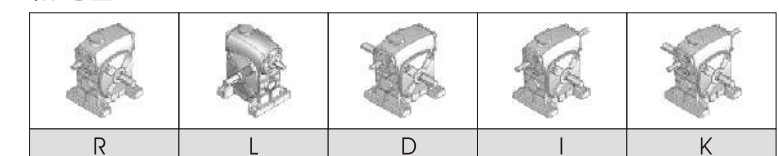
尺寸表 Dimension

規格 Size	減速比 Ratio	A	AB	B	BB	CC	FA	FB	FC	FD	G	GA	H	HA	HB	實心入力軸 Solid Input Shaft				實心出力軸 Solid Output Shaft				油量 (l)	概重 (kg)
																l(h6)	IB	ID	IE	S(h6)	SB	SD	SE		
50	1:10	175	105	145	95	50	140	120	110	95	15	11	180	80	50	12	30	13.5	4	17	40	19	5	0.33	5.5
60		195	120	165	110	60	150	130	120	105	18	11	210	90	60	15	40	17	5	22	50	25	7	0.40	8.2
70	1:15	234	140	195	130	70	190	150	150	115	20	15	240	105	65	18	40	20	5	28	60	31	7	0.78	12.8
80	1:20	264	160	210	140	80	220	170	180	135	24	15	270	120	70	22	50	25	7	32	65	35	10	1.15	18.0
100	1:30	322	190	260	170	100	270	190	220	155	25	15	340	150	90	25	50	28	7	38	75	41	10	2.35	33.0
120	1:40	385	230	290	190	120	320	230	260	180	30	18	405	180	105	30	65	33	7	45	85	48	12	4.18	55.0
135	1:50	435	260	320	210	135	350	250	290	200	30	18	455	215	105	35	75	38	10	55	95	60	15	5.56	76.0
155	1:60	494	302	387	252	155	390	280	320	220	35	20	490	235	100	40	85	43	10	60	110	65	15	6.95	104
175		550	325	407	262	175	420	310	350	250	40	20	565	260	130	45	85	48	12	65	110	69	18	9.50	148

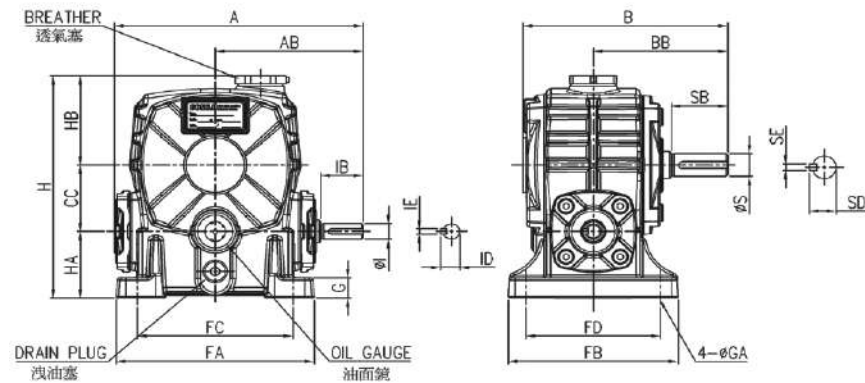
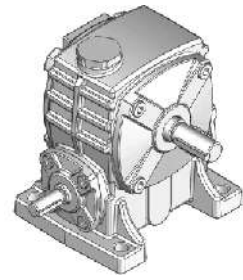
TKA 60 - 30 R

1. 機型 Type
2. 規格 Size
3. 速比 Ratio
4. 軸配置 S. L.

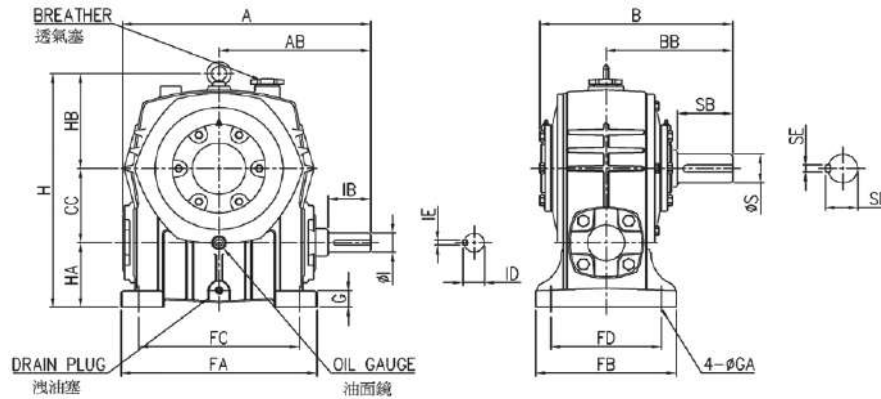
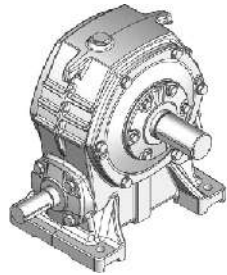
軸配置 Shaft Location



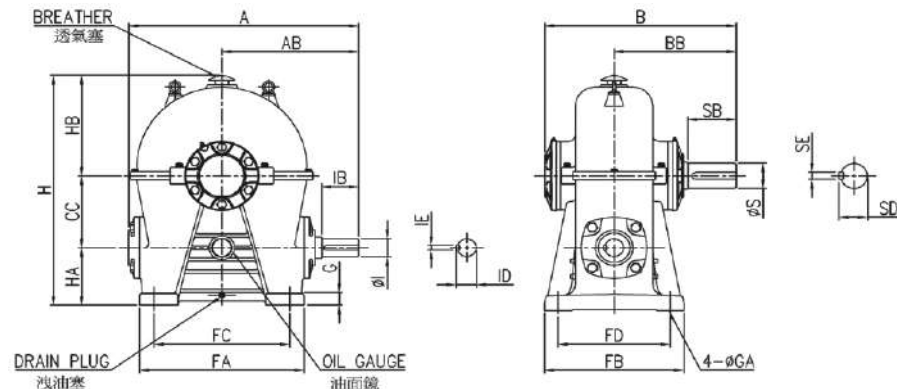
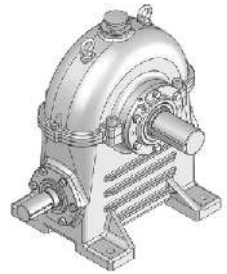
TKB 50~135



TKB 155~175



TKB 200~500



尺寸表 Dimension

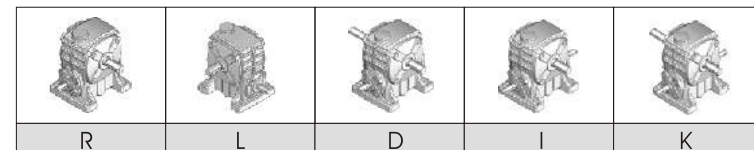
規格 Size	減速比 Ratio	A	AB	B	BB	CC	FA	FB	FC	FD	G	GA	H	HA	HB	實心入力軸 Solid Input Shaft				實心出力軸 Solid Output Shaft				油量 (l)	概重 (kg)
																l(h6)	IB	ID	IE	S(h6)	SB	SD	SE		
50	1:10	175	105	145	95	50	140	120	110	95	15	11	180	50	80	12	30	13.5	4	17	40	19	5	0.17	5.3
60		195	120	165	110	60	150	130	120	105	18	11	210	60	90	15	40	17	5	22	50	25	7	0.27	8.1
70		234	140	195	130	70	190	150	150	115	20	15	240	70	100	18	40	20	5	28	60	31	7	0.55	13.4
80		264	160	210	140	80	220	170	180	135	24	15	270	80	110	22	50	25	7	32	65	35	10	0.73	18.0
100		322	190	260	170	100	270	190	220	155	25	15	340	100	140	25	50	28	7	38	75	41	10	1.24	30.0
120		385	230	290	190	120	320	230	260	180	30	18	405	120	165	30	65	33	7	45	85	48	12	2.08	52.0
135		435	260	320	210	135	350	250	290	200	30	18	455	135	185	35	75	38	10	55	95	60	15	2.75	74.0
155		494	302	387	252	155	390	280	320	220	35	20	490	135	200	40	85	43	10	60	110	65	15	3.90	101
175		550	325	407	262	175	420	310	350	250	40	20	565	160	230	45	85	48	12	65	110	69	18	5.20	143
200		592	352	495	315	200	410	360	350	290	35	22	650	160	290	50	95	53	12	70	125	74.5	20	6.60	175
225	1:50	645	375	520	335	225	470	410	390	330	40	27	705	180	300	55	95	60	15	80	140	84.5	20	9.63	205
250		742	425	555	360	250	520	460	440	380	42	27	780	200	330	60	110	65	15	90	155	98	24	12.8	296
300		827	470	610	410	300	580	450	480	340	50	36	855	200	355	70	125	74	18	95	170	101	28	14.6	380
350		980	570	750	480	350	700	520	597	432	50	43	995	215	430	80	145	84.5	20	115	190	122	32	25.2	560
400		1100	620	775	500	400	812	580	660	470	50	43	1105	250	455	85	150	93	24	130	200	138	36	52.0	850
500		1410	810	950	610	500	1040	710	889	584	60	48	1390	290	600	95	205	103	24	170	240	179	40	78.0	1500

TKB 135 - 60 R

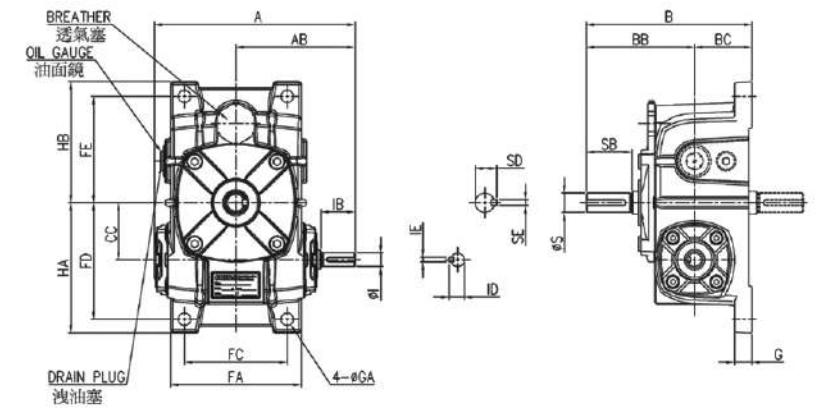
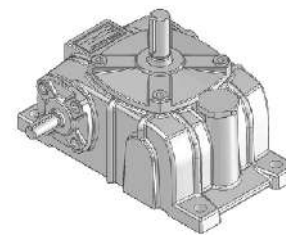
1 2 3 4

- 1.機型 Type
- 2.規格 Size
- 3.速比 Ratio
- 4.軸配置 S. L.

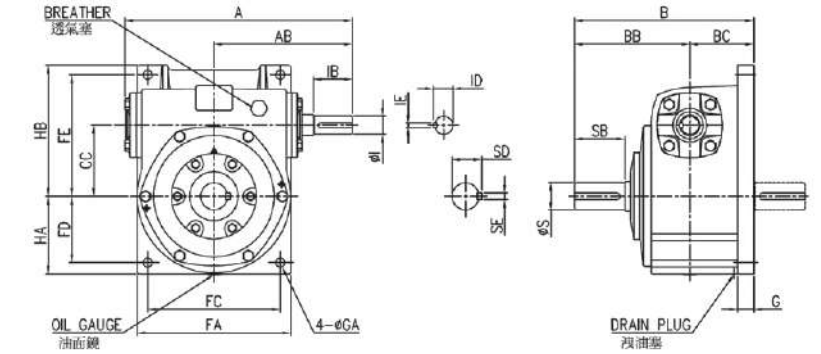
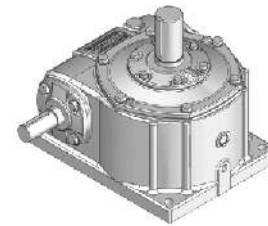
軸配置 Shaft Location



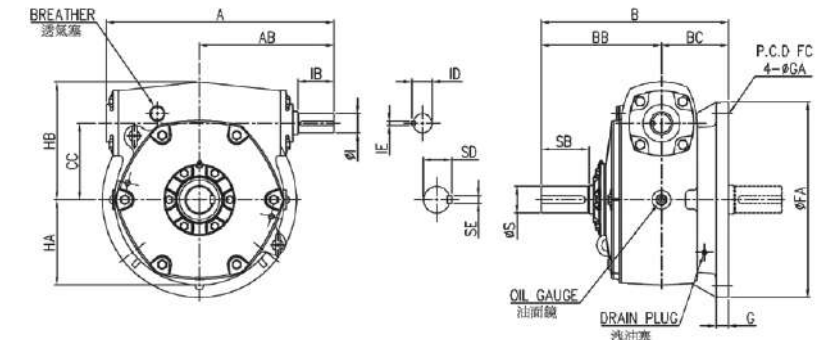
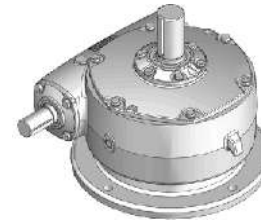
TKV 50~135



TKV 155~175



TKV 200~500



尺寸表 Dimension

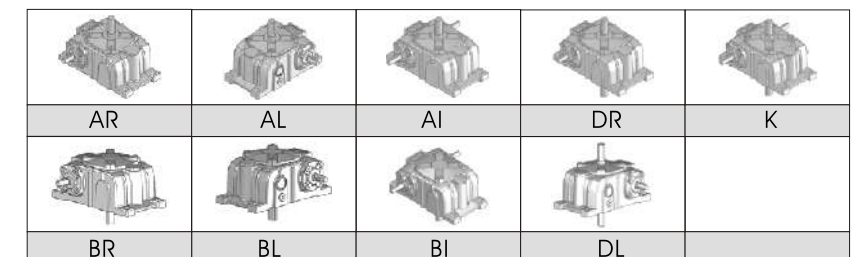
規格 Size	減速比 Ratio	A	AB	B	BB	BC	CC	FA	FC	FD	FE	G	GA	HA	HB	實心入力軸 Solid Input Shaft				實心出力軸 Solid Output Shaft				油量 (l)	概重 (kg)
																l(h6)	IB	ID	IE	S(h6)	SB	SD	SE		
50	1:10	175	105	145	95	50	50	116	90	102	93	15	11	114	106	12	30	13.5	4	17	40	19	5	0.48	5.9
60		195	120	165	110	55	60	126	100	120	105	15	11	137	123	15	40	17	5	22	50	25	7	0.70	8.8
70		234	140	195	130	65	70	156	120	135	120	20	15	155	140	18	40	20	5	28	60	31	7	0.95	14.2
80		264	160	210	140	70	80	176	140	150	130	20	15	170	150	22	50	25	7	32	65	35	10	1.45	18.0
100		322	190	260	170	90	100	226	190	180	155	30	15	200	175	25	50	28	7	38	75	41	10	2.50	33.0
120		385	230	290	190	100	120	268	220	215	185	30	18	240	210	30	65	33	7	45	85	48	12	5.07	57.0
135		435	260	320	210	110	135	306	260	235	210	35	18	260	235	35	75	38	10	55	95	60	15	7.13	81.0
155		494	302	392	252	140	155	336	290	265	245	35	20	286	170	40	85	43	10	60	110	65	15	6.80	111
175		550	325	412	262	150	175	380	320	293	267	40	20	324	196	45	85	48	12	65	110	69	18	11.0	140
200		592	352	490	315	175	200	510	450	-	-	40	22	343	255	50	95	53	12	70	125	74.5	20	14.4	201
225	1:50	645	375	525	335	190	225	580	510	-	-	40	27	374	290	55	95	60	15	80	140	84.5	20	19.5	225
250		742	425	560	360	200	250	640	570	-	-	42	27	419	320	60	110	65	15	90	155	98	24	23.8	333
300		827	470	645	410	235	300	750	660	-	-	42	36	493	375	70	125	74	18	95	170	101	28	33.5	490
350		980	570	770	480	290	350	880	780	-	-	45	43	642	440	80	145	84.5	20	115	190	122	32	63.0	700
400		1100	620	795	500	295	400	960	860	-	-	50	43	722	480	85	150	93	24	130	200	138	36	105	950
500		1410	810	980	610	370	500	1160	1080	-	-	55	48	890	580	95	205	103	24	170	240	179	40	175	1650

TKV 135 - 60 AR

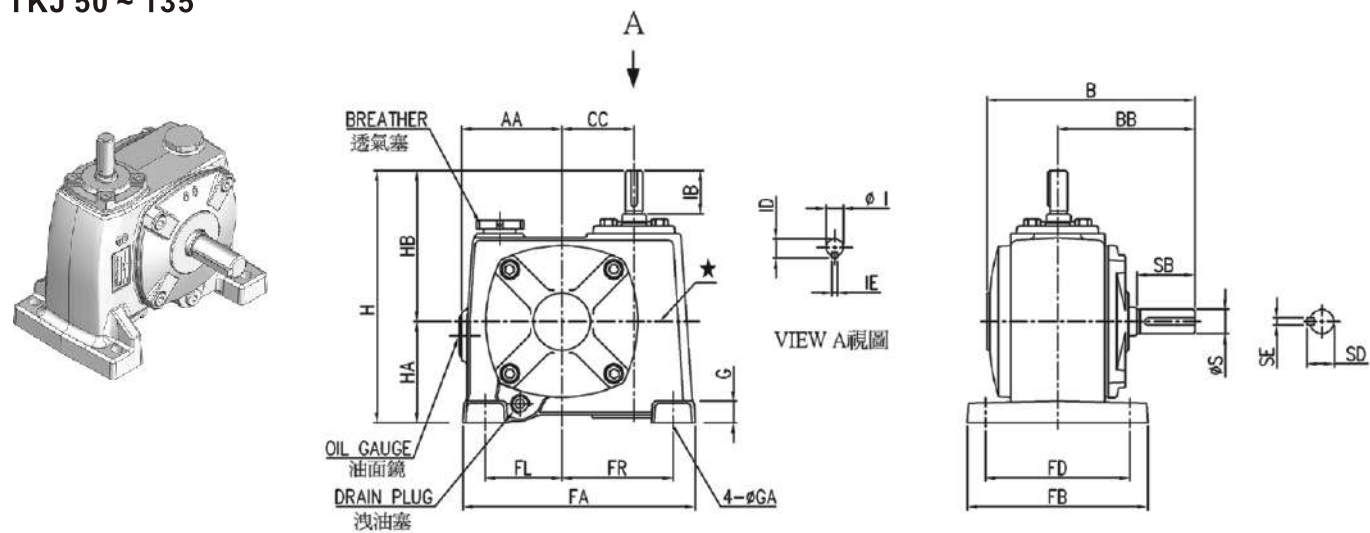
1 2 3 4

- 1.機型 Type
- 2.規格 Size
- 3.速比 Ratio
- 4.軸配置 S. L.

軸配置 Shaft Location



TKJ 50 ~ 135



尺寸表 Dimension

規格 Size	減速比 Ratio	AA	B	BB	CC	FA	FB	FD	FL	FR	G	GA	H
50		66	175	95	50	161	125	100	53	77	15	11	175
60	1:10	90	165	110	60	261	130	105	103	130	20	11	205
70	1:15 1:20	100	195	130	70	295	150	115	115	150	20	15	240
80	1:30	107	210	140	80	322	170	135	122	170	20	15	275
100	1:40 1:50	133	260	170	100	396	190	155	150	210	25	15	335
120	1:60	148	290	190	120	360	230	180	120	180	32	18	390
135		155	320	210	135	390	250	200	130	200	33	18	430

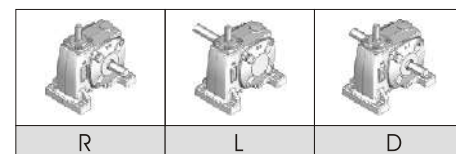
*120型及135型油面鏡在★位置. Oil gauge location on mark ★ for Size120&135

規格 Size	減速比 Ratio	HA	HB	實心入力軸 Solid Input Shaft				實心出力軸 Solid Output Shaft				油量 (l)	概重 (kg)
				φ I(h6)	IB	ID	IE	φ S(h6)	SB	SD	SE		
50		70	105	12	30	13.5	4	17	40	19	5	0.35	5.7
60	1:10	85	120	15	40	17	5	22	50	25	7	0.45	8.2
70	1:15 1:20	100	140	18	40	20	5	28	60	31	7	0.77	12.6
80	1:30	115	160	22	50	25	7	32	65	35	10	1.08	16.2
100	1:40 1:50	145	190	25	50	28	7	38	75	41	10	1.88	33.9
120	1:60	160	230	30	65	33	7	45	85	48	12	3.83	56.7
135		170	260	35	75	38	10	55	95	60	15	4.10	75.5

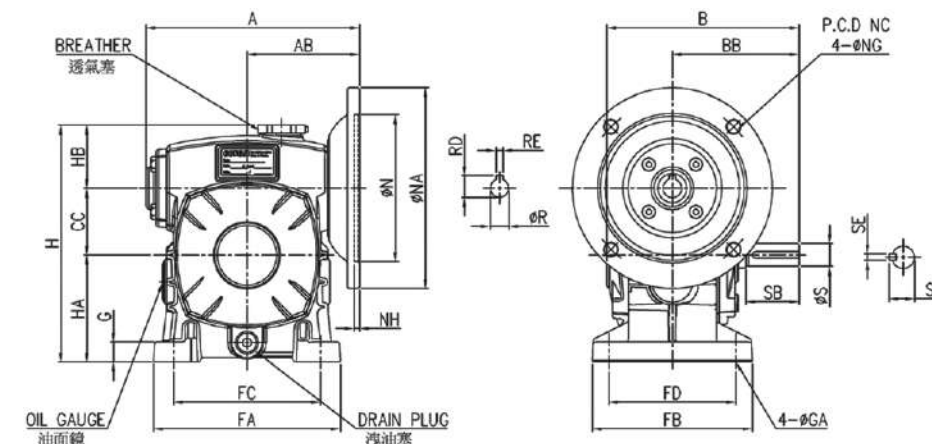
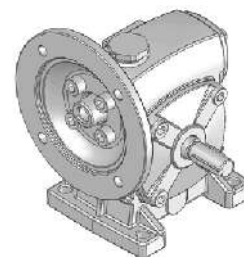
TKJ 60 - 60 R - 1/2HP
1 2 3 4 5

- 機型 Type
- 規格 Size
- 速比 Ratio
- 軸配置 S. L.
- 馬力 Power

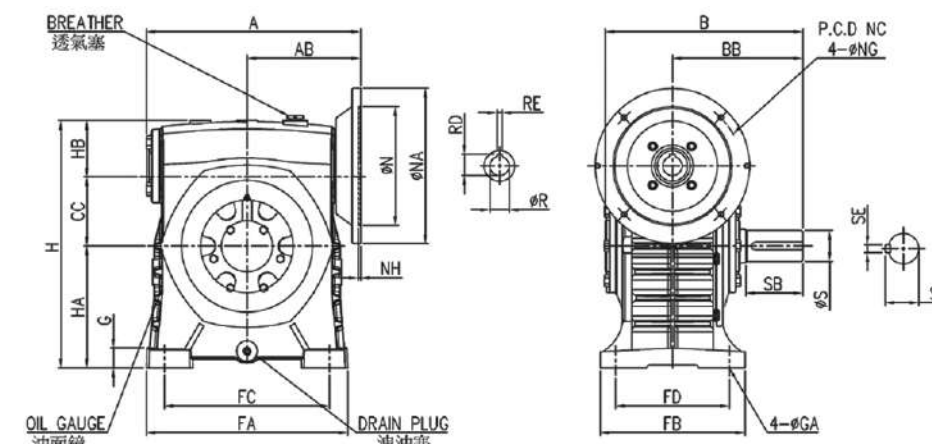
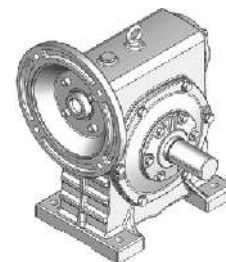
軸配置 Shaft Location



TKAE 50~135



TKAE 155~175



尺寸表 Dimension

規格 Size	減速比 Ratio	A	AB	B	BB	CC	FA	FB	FC	FD	G	GA
50		163	85	145	95	50	140	120	110	95	15	11
60	1:10	177	90	165	110	60	150	130	120	105	18	11
70	1:15	211	117	195	130	70	190	150	150	115	20	15
80	1:20	233	129	210	140	80	220	170	180	135	24	15
100	1:30	286	160	260	170	100	270	190	220	155	25	15
120	1:40	349	180	290	190	120	320	230	260	180	30	18
135	1:50	373	201	320	210	135	350	250	290	200	30	18
155	1:60	413	221	387	252	155	390	280	320	220	35	20
175		456	240	407	262	175	420	310	350	250	40	20

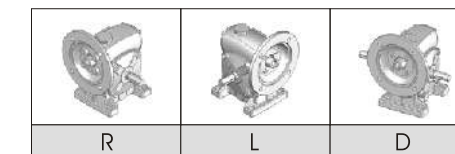
規格 Size	減速比 Ratio	H	HA	HB	實心出力軸 Solid Output Shaft				油量 (l)	概重 (kg)
					φ S(h6)	SB	SD	SE		
50		180	80	50	17	40	19	5	0.33	6.6
60	1:10	210	90	60	22	50	25	7	0.40	8.4
70	1:15	240	105	65	28	60	31	7	0.78	13.9
80	1:20	270	120	70	32	65	35	10	1.15	20.0
100	1:30	340	150	90	38	75	41	10	2.35	35.0
120	1:40	405	180	105	45	85	48	12	4.18	58.0
135	1:50	455	215	105	55	95	60	15	5.56	79.0
155	1:60	490	235	100	60	110	65	15	5.95	112.0
175		565	260	130	65	110	69	18	9.50	164.0

*入力法蘭界面尺寸請參考D-24頁. Please reference page D-24 for input flange dimensions.

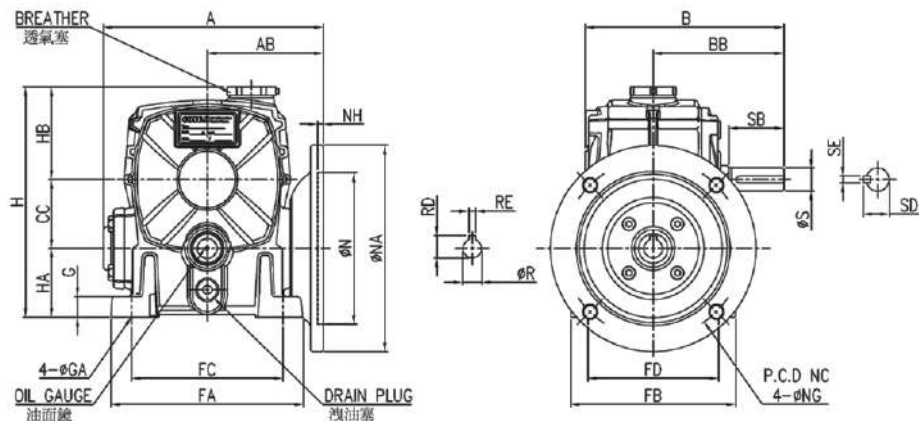
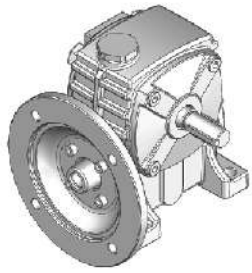
TKAE 135 60 R - 5HP
1 2 3 4 5

- 機型 Type
- 規格 Size
- 速比 Ratio
- 軸配置 S. L.
- 馬力 Power

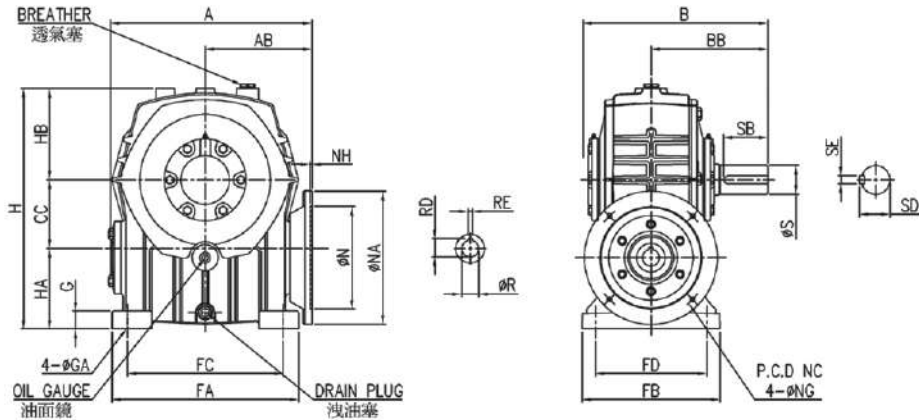
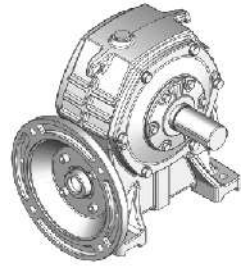
軸配置 Shaft Location



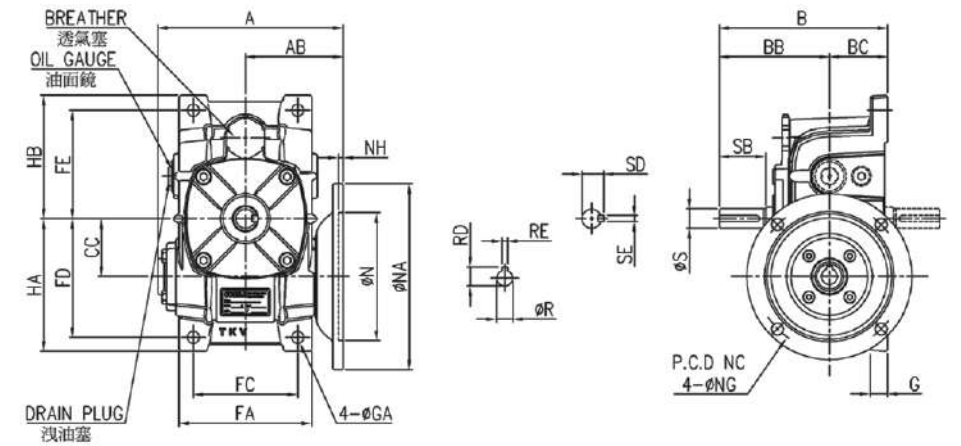
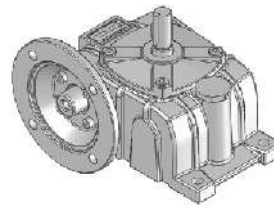
TKBE 50~135



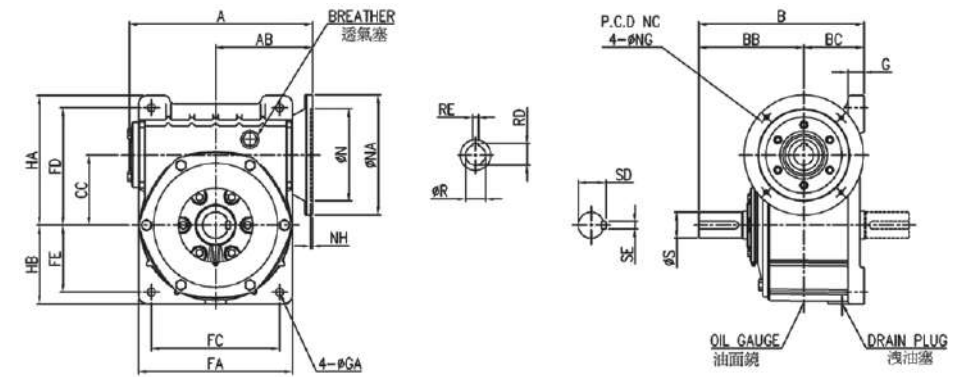
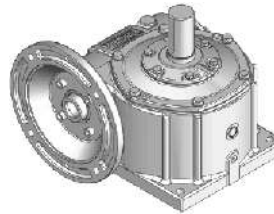
TKBE 155~175



TKVE 50~135



TKVE 155~175



尺寸表 Dimension

規格 Size	減速比 Ratio	A	AB	B	BB	CC	FA	FB	FC	FD	G	GA
50	1:10	163	85	145	95	50	140	120	110	95	15	11
60		177	90	165	110	60	150	130	120	105	18	11
70	1:15	211	117	195	130	70	190	150	150	115	20	15
80	1:20	233	129	210	140	80	220	170	180	135	24	15
100	1:30	286	160	260	170	100	270	190	220	155	25	15
120	1:40	349	180	290	190	120	320	230	260	180	30	18
135	1:50	373	201	320	210	135	350	250	290	200	30	18
155	1:60	413	221	387	252	155	390	280	320	220	35	20
175		456	240	407	262	175	420	310	350	250	40	20

尺寸表 Dimension

規格 Size	減速比 Ratio	A	AB	B	BB	BC	CC	FA	FC	FD	FE	G
50	1:10	163	85	145	95	50	50	116	90	102	93	15
60		177	90	165	110	55	60	126	100	120	105	15
70	1:15	211	117	195	130	65	70	156	120	135	120	20
80	1:20	233	129	210	140	70	80	176	140	150	130	20
100	1:30	286	160	260	170	90	100	226	190	180	155	30
120	1:40	349	180	290	190	100	120	268	220	215	185	30
135	1:50	373	201	320	210	110	135	306	260	235	210	35
155	1:60	413	221	392	252	140	155	336	290	265	145	35
175		456	240	412	262	150	175	380	320	293	167	40

規格 Size	減速比 Ratio	H	HA	HB	實心出力軸 Solid Output Shaft			油量 (l)	概重 (kg)	
					φ S(h6)	SB	SD			SE
50	1:10	180	50	80	17	40	19	5	0.17	6.4
60		210	60	90	22	50	25	7	0.27	8.3
70	1:15	240	70	100	28	60	31	7	0.55	14.5
80	1:20	270	80	110	32	65	35	10	0.73	20.0
100	1:30	340	100	140	38	75	41	10	1.24	31.0
120	1:40	405	120	165	45	85	48	12	2.08	56.0
135	1:50	455	135	185	55	95	60	15	2.75	77.0
155	1:60	490	135	200	60	110	65	15	3.90	109.0
175		565	160	230	65	110	69	18	5.20	159.0

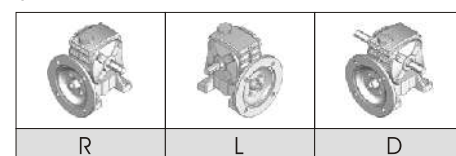
規格 Size	減速比 Ratio	GA	HA	HB	實心出力軸 Solid Output Shaft			油量 (l)	概重 (kg)	
					φ S(h6)	SB	SD			SE
50	1:10	11	114	106	17	40	19	5	0.48	7.0
60		11	137	123	22	50	25	7	0.70	8.9
70	1:15	15	155	140	28	60	31	7	0.95	15.0
80	1:20	15	170	150	32	65	35	10	1.45	20.0
100	1:30	15	200	175	38	75	41	10	2.50	35.0
120	1:40	18	240	210	45	85	48	12	5.07	61.0
135	1:50	18	260	235	55	95	60	15	7.13	84.0
155	1:60	20	286	170	60	110	65	15	6.80	119.0
175		20	324	196	65	110	69	18	11.00	156.0

TKBE 80 - 60 R - 1HP

1 2 3 4 5

- 機型 Type
- 規格 Size
- 速比 Ratio
- 軸配置 S. L.
- 馬力 Power

軸配置 Shaft Location

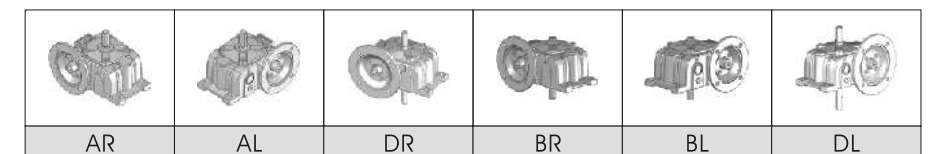


TKVE 80 - 60 AR - 1HP

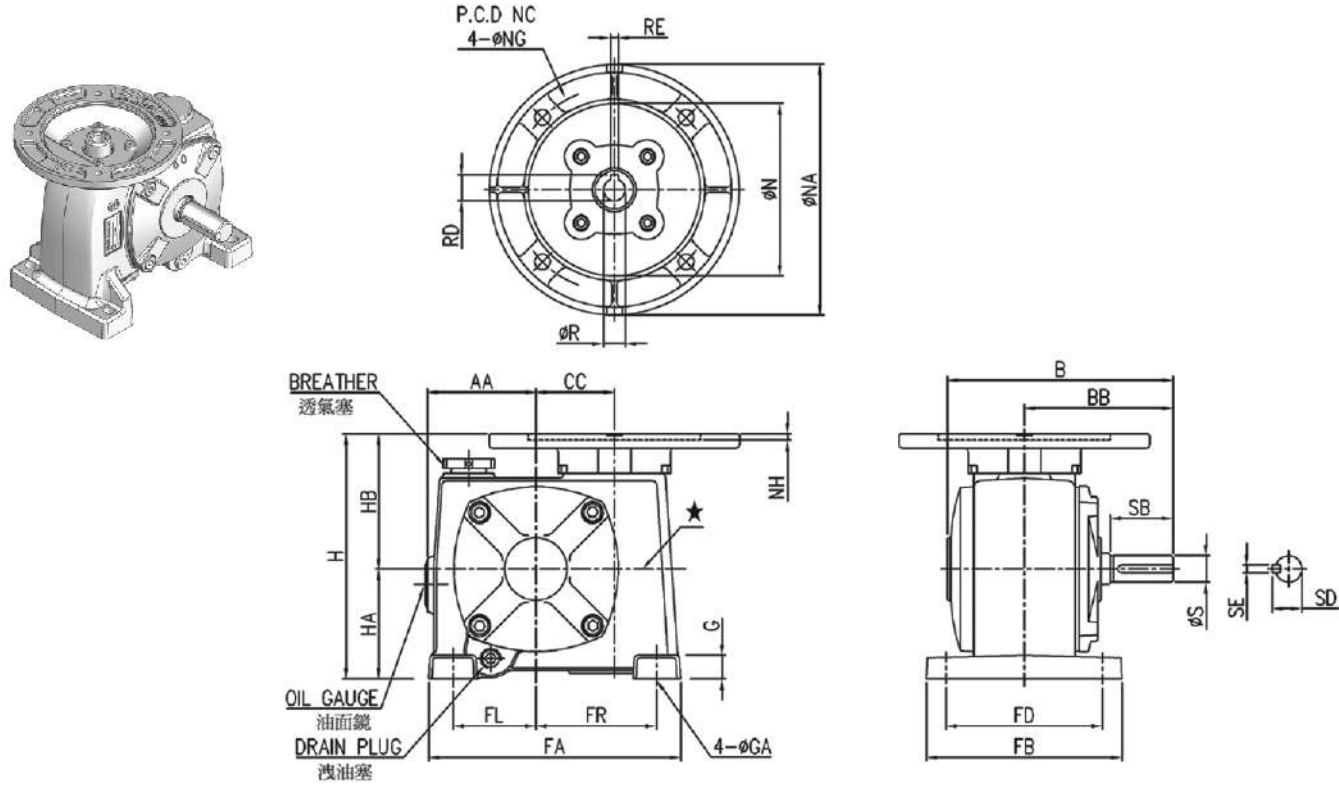
1 2 3 4 5

- 機型 Type
- 規格 Size
- 速比 Ratio
- 軸配置 S. L.
- 馬力 Power

軸配置 Shaft Location



TKJE 50~135



尺寸表 Dimension

規格 Size	減速比 Ratio	AA	B	BB	CC	FA	FB	FD	FL	FR	G	GA
50		66	175	95	50	161	125	100	53	77	15	11
60	1:10	90	165	110	60	261	130	105	103	130	20	11
	1:15											
70	1:20	100	195	130	70	295	150	115	115	150	20	15
80	1:30	107	210	140	80	322	170	135	122	170	20	15
100	1:40	133	260	170	100	396	190	155	150	210	25	15
120	1:50	148	290	190	120	360	230	180	120	180	32	18
	1:60											
135		155	320	210	135	390	250	200	130	200	33	18

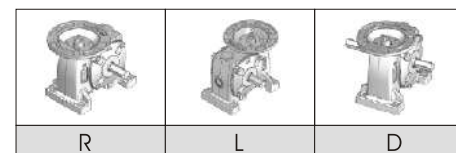
*120型及135型油面鏡在★位置. Oil gauge location on mark ★ for Size 120&135

規格 Size	減速比 Ratio	H	HA	HB	實心出力軸 Solid Output Shaft				油量 (l)	概重 (kg)
					φ S(h6)	SB	SD	SE		
50	1:10	156	70	86	17	40	19	5	0.35	6.8
60	1:15	179	85	94	22	50	25	7	0.45	8.4
70	1:20	217	100	117	28	60	31	7	0.77	13.7
80	1:30	244	115	129	32	65	35	10	1.08	17.7
100	1:40	305	145	160	38	75	41	10	1.88	35.9
120	1:50	338	160	178	45	85	48	12	3.83	56.3
135	1:60	365	170	195	55	95	60	15	4.10	78.5

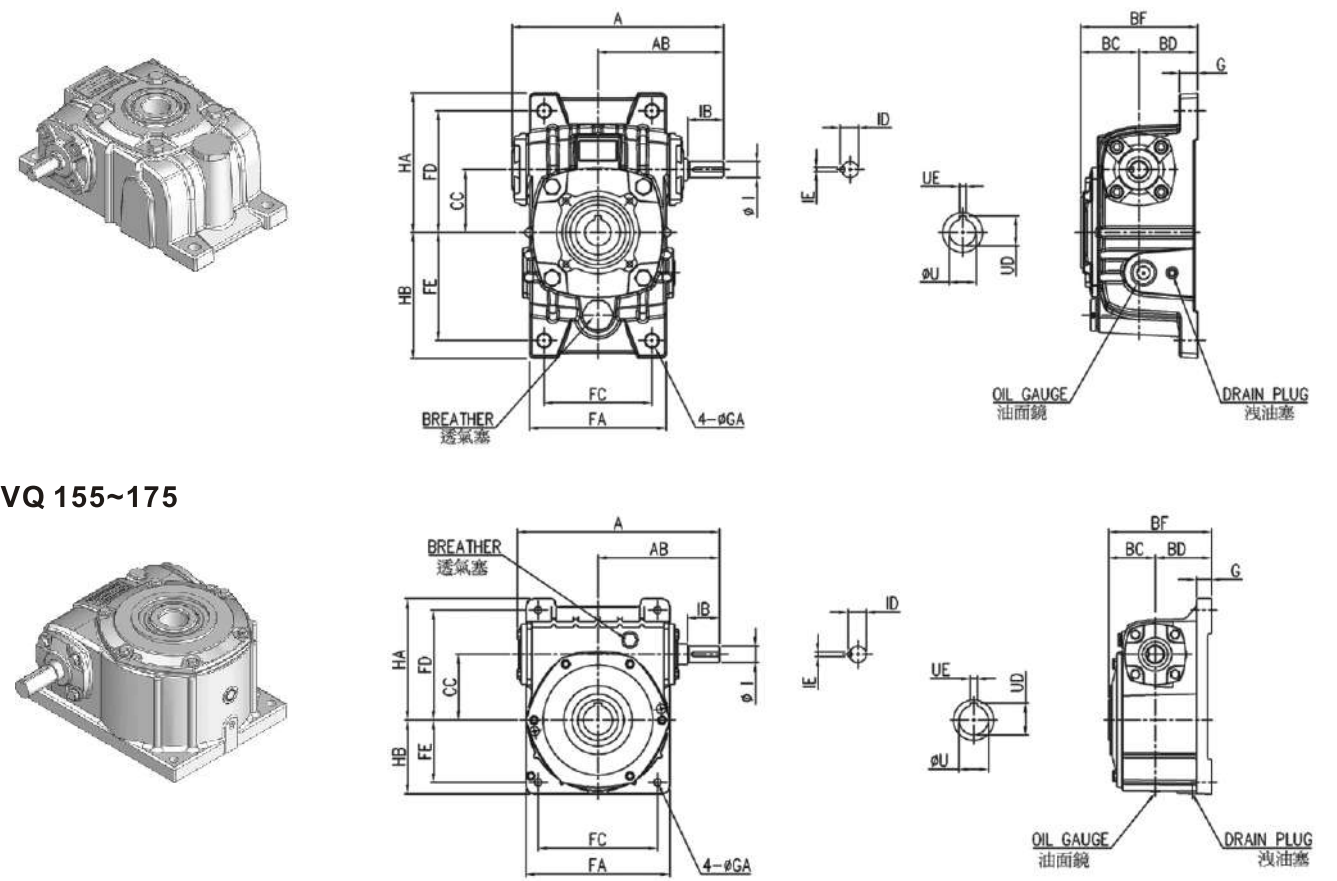
TKJE 120 - 60 R - 3HP

- 機型 Type
- 規格 Size
- 速比 Ratio
- 軸配置 S. L.
- 馬力 Power

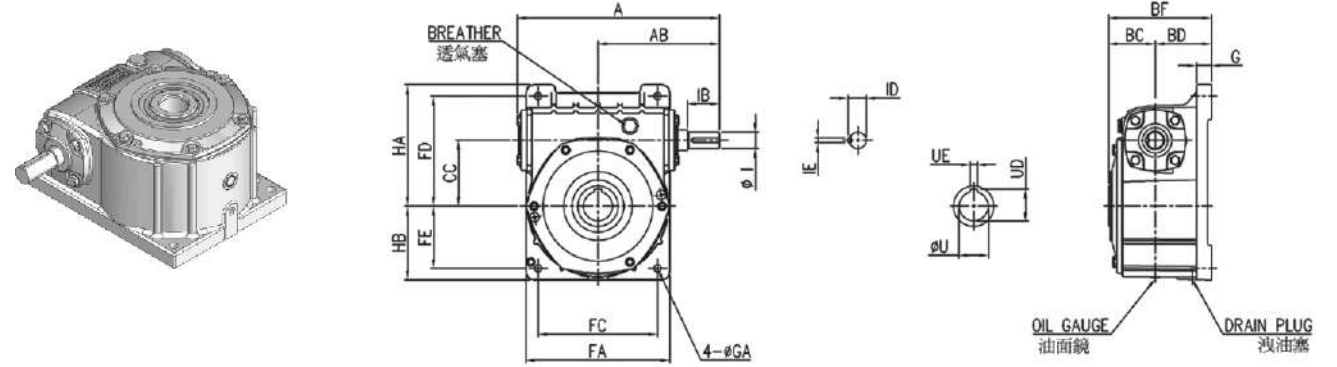
軸配置 Shaft Location



TKVQ 70 ~ 135



TKVQ 155~175



尺寸表 Dimension

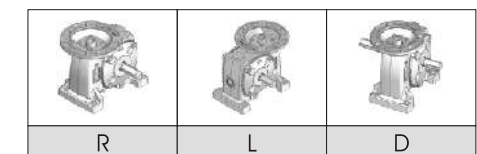
規格 Size	減速比 Ratio	A	AB	BC	BD	BF	CC	FA	FC	FD	FE	G	GA
70		234	140	65.5	65	130.5	70	156	120	135	120	20	15
80	1:10	264	160	72	70	142	80	176	140	150	130	20	15
	1:15												
100	1:20	322	190	87.5	90	177.5	100	226	190	180	155	30	15
120	1:30	385	230	100	100	200	120	268	220	215	185	30	18
135	1:40	435	260	108	110	218	135	306	260	235	210	35	18
155	1:50	494	302	115	140	255	155	336	290	265	145	35	20
	1:60												
175		550	325	125	150	275	175	380	320	293	167	40	20

規格 Size	減速比 Ratio	HA	HB	實心入力軸 Solid Input Shaft				出力中空軸 Hollow Output Shaft			油量 (l)	概重 (kg)
				φ I(h6)	IB	ID	IE	φ U(H7)	UD	UE		
70		155	140	18	40	20	5	30	33	7	0.95	13.6
80	1:10	170	150	22	50	25	7	35	38	10	1.45	18.5
	1:15											
100	1:20	200	175	25	50	28	7	40	43	12	2.50	32.2
120	1:30	240	210	30	65	33	7	45	48.5	14	5.07	56.8
135	1:40	260	235	35	75	38	10	55	60	15	7.13	81.5
155	1:50	286	170	40	85	43	10	65	69.4	18	6.80	107.0
	1:60											
175		324	196	45	85	48	12	80	84.9	20	11.00	132.0

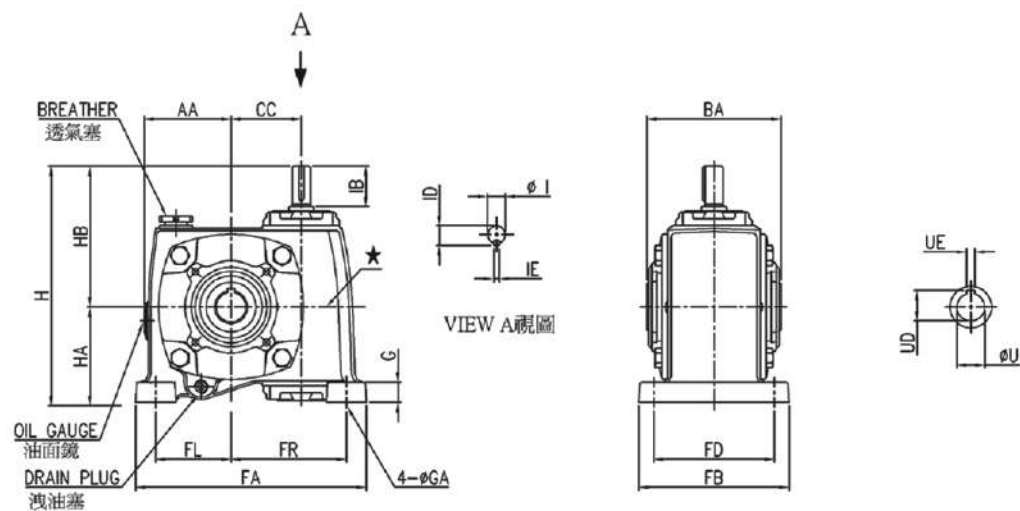
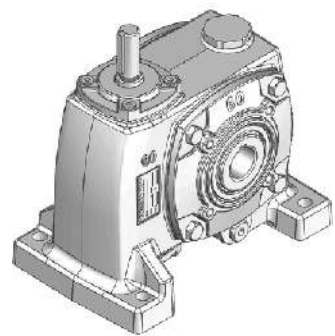
TKVQ 60 - 60 AR - 1/2HP

- 機型 Type
- 規格 Size
- 速比 Ratio
- 軸配置 S. L.
- 馬力 Power

軸配置 Shaft Location



TKJQ 50 ~ 135



尺寸表 Dimension

規格 Size	減速比 Ratio	AA	BA	CC	FA	FB	FD	FL	FR	G	GA	H	HA	HB
50	1:10 1:15 1:20 1:30 1:40 1:50 1:60	66	99	50	161	125	100	53	77	15	11	175	70	105
60		90	112	60	261	130	105	103	130	20	11	205	85	120
70		100	131	70	295	150	115	115	150	20	15	240	100	140
80		107	144	80	322	170	135	122	170	20	15	275	115	160
100		133	175	100	396	190	155	150	210	25	15	335	145	190
120		148	200	120	360	230	180	120	180	32	18	390	160	230
135	155	216	135	390	250	200	130	200	33	18	430	170	260	

* 120型及135型油面鏡在★位置。 Oil gauge location on mark ★ for Size120&135

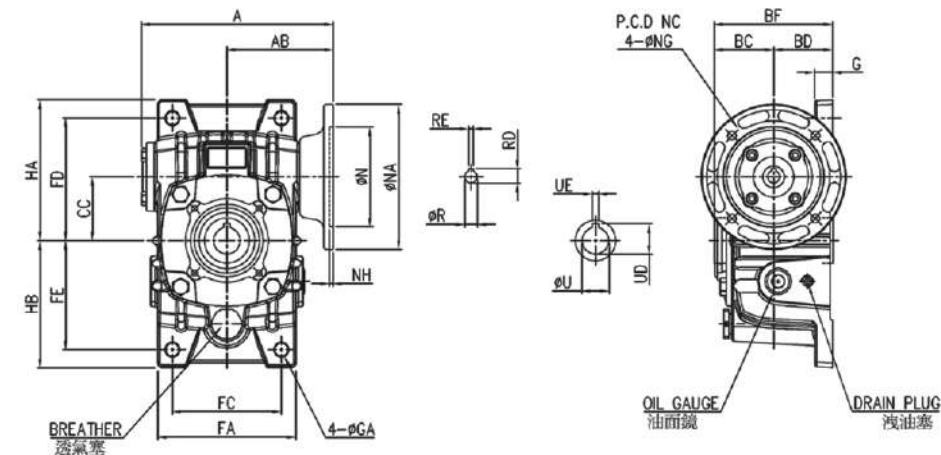
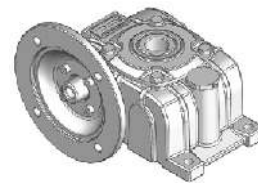
規格 Size	減速比 Ratio	實心入力軸 Solid Input Shaft				中空出力軸 Hollow Output Shaft			油量 (l)	概重 (kg)
		φ I(h6)	IB	ID	IE	φ U(H7)	UD	UE		
50	1:10 1:15 1:20 1:30 1:40 1:50 1:60	12	30	13.5	4	25	28	7	0.35	6.0
60		15	40	17	5	25	28	7	0.45	8.7
70		18	40	20	5	30	33	7	0.77	12.0
80		22	50	25	7	35	38	10	1.08	16.7
100		25	50	28	7	40	43	12	1.88	33.1
120		30	65	33	7	45	48.5	14	3.83	56.4
135	35	75	38	10	55	60	15	4.10	76.0	

TKJQ 60 - 60 R - 1/2HP

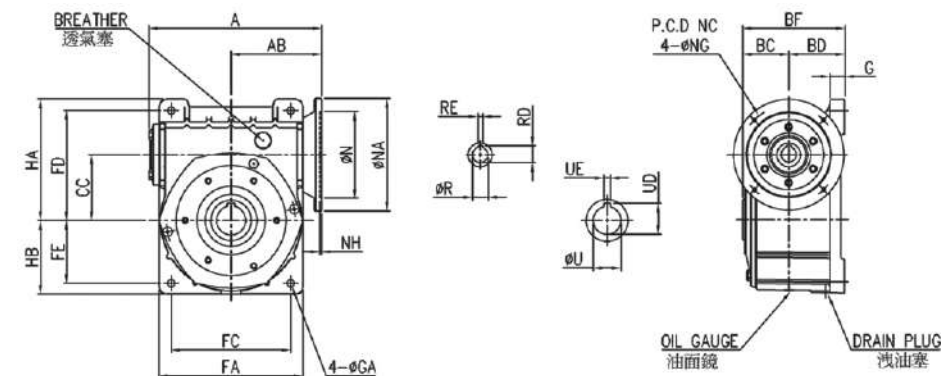
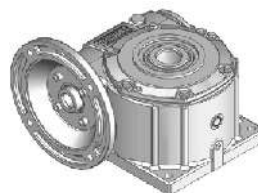
1 2 3 4 5

1. 機型 Type 2. 規格 Size 3. 速比 Ratio
4. 軸配置 S. L. 5. 馬力 Power

TKVEQ 70 ~ 135



TKVEQ 155 ~ 175



尺寸表 Dimension

規格 Size	減速比 Ratio	A	AB	BC	BD	BF	CC	FA	FC	FD	FE	G	GA
70	1:10 1:15 1:20 1:30 1:40 1:50 1:60	211	117	65.5	65	135.5	70	156	120	135	120	20	15
80		233	129	72	70	142	80	176	140	150	130	20	15
100		286	160	87.5	90	177.5	100	226	190	180	155	30	15
120		349	180	100	100	200	120	268	220	215	185	30	18
135		373	201	108	110	218	135	306	260	235	210	35	18
155		413	221	115	140	255	155	336	290	265	145	35	20
175	456	240	125	150	275	175	380	320	293	167	40	20	

規格 Size	減速比 Ratio	HA	HB	出力中空軸 Output Shaft			油量 (l)	概重 (kg)
				φ U(H7)	UD	UE		
70	1:10 1:15 1:20 1:30 1:40 1:50 1:60	155	140	30	33	7	0.95	14.4
80		170	150	35	38	10	1.45	20.5
100		200	175	40	43	12	2.50	34.2
120		240	210	45	48.5	14	5.07	60.7
135		260	235	55	60	15	7.13	84.4
155		286	170	65	69.4	18	6.80	114.5
175	324	196	80	84.9	20	11.00	148.0	

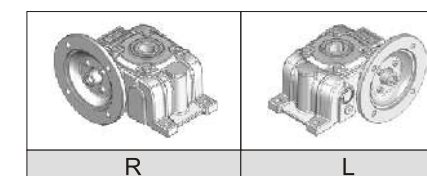
* 入力法蘭界面尺寸請參考D-24頁。 Please reference page D-24 for input flange dimensions .

TKVEQ 60 - 60 R - 1/2HP

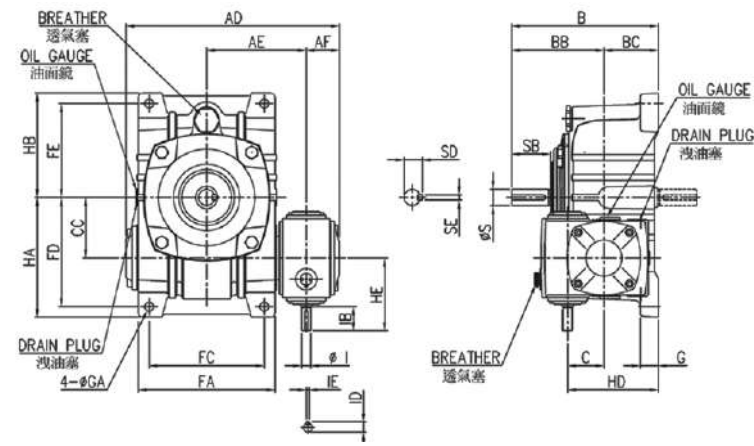
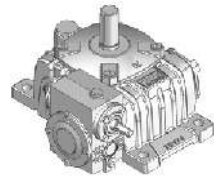
1 2 3 4 5

1. 機型 Type 2. 規格 Size 3. 速比 Ratio
4. 軸配置 S. L. 5. 馬力 Power

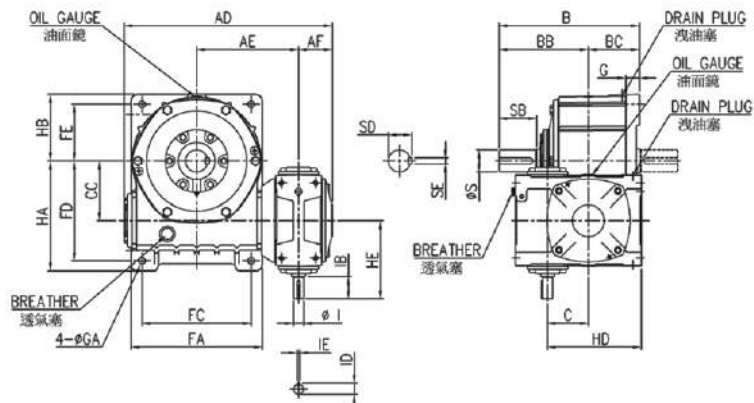
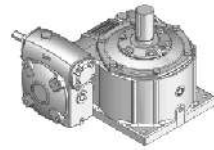
軸配置 Shaft Location



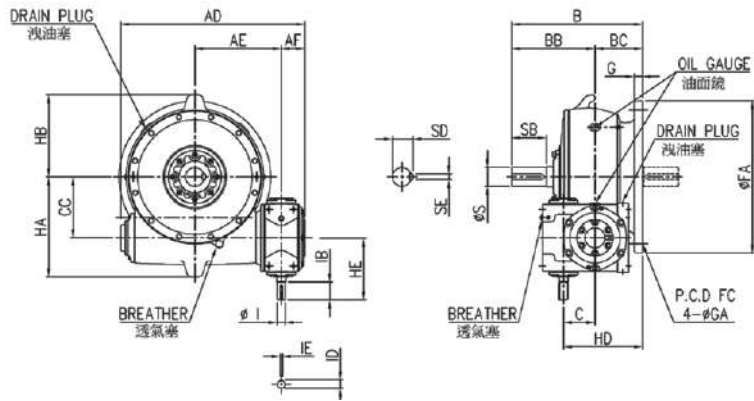
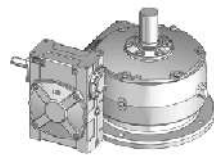
TKVW 60~135



TKVW 155~175



TKVW 200~300



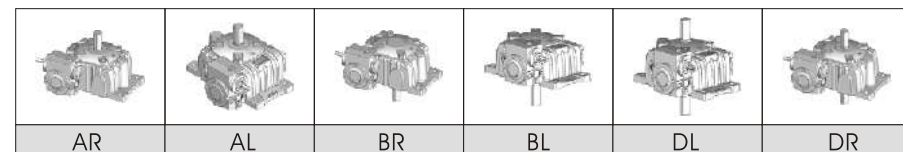
尺寸表 Dimension

規格 Size	減速機 Ratio	AD	AE	AF	B	BB	BC	C	CC	FA	FC	FD	FE	G	GA	HA	HB	HD	HE	實心入力軸 Solid Input Shaft				實心出力軸 Solid Output Shaft				油量 (l)		概重 (kg)	
																				l(h)	IB	ID	IE	S(h)	SB	SD	SE	1st	2nd		
60	1:100	218	100	43	165	110	55	34	86	60	126	100	120	105	15	11	137	123	89	88	12	28	13.5	4	22	50	25	7	0.09	0.70	11.6
70		261	121	46	195	130	65	50	70	156	120	135	120	20	15	155	140	110	96	12	28	13.5	4	28	60	31	7	0.10	0.95	17	
80		284	130	50	210	140	70	60	80	176	140	150	130	20	15	170	150	120	105	12	30	13.5	4	32	65	35	10	0.33	1.45	22	
100		352	165	55	260	170	90	70	100	226	190	180	155	30	15	200	175	150	120	15	40	17	5	38	75	41	10	0.40	2.50	39	
120	1:300	415	195	65	290	190	100	80	120	268	220	215	185	30	18	240	210	170	140	18	40	20	5	45	85	48	12	0.78	5.07	68	
135	1:400	465	220	70	320	210	110	100	135	306	260	235	210	35	18	260	235	190	160	22	50	25	7	55	95	60	15	1.15	7.13	95	
155	1:500	539	257	90	392	252	140	120	155	336	290	265	245	35	20	286	170	240	190	25	50	28	7	60	110	65	15	1.65	7.50	139	
175	1:600	624	299	100	412	262	150	135	175	380	320	293	267	40	20	321	195	270	230	30	65	33	7	65	110	69	18	3.82	11.0	200	
200	1:800	672	322	110	490	315	175	135	200	510	450	-	-	40	22	343	255	310	260	35	75	38	10	70	125	74.5	20	5.32	14.4	260	
225	1:900	735	355	110	525	335	190	155	225	580	510	-	-	40	27	374	290	325	260	35	75	38	10	80	140	84.5	20	5.32	19.5	284	
250	1:900	844	392	135	560	360	200	155	250	640	570	-	-	42	27	419	320	355	302	40	85	43	10	90	155	98	24	5.45	23.8	433	
300		920	425	135	645	410	235	-	-	300	750	660	-	-	42	36	493	375	390	302	40	85	43	10	95	170	101	28	5.45	33.5	590

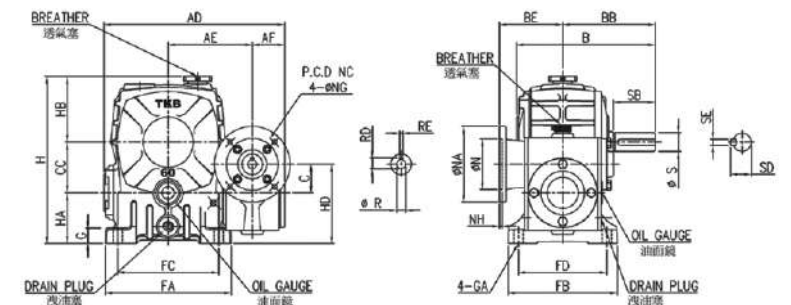
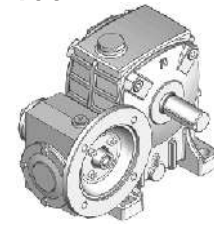
TKVW 135 - 600 AR

- 機型 Type
- 規格 Size
- 速比 Ratio
- 軸配置 S. L.

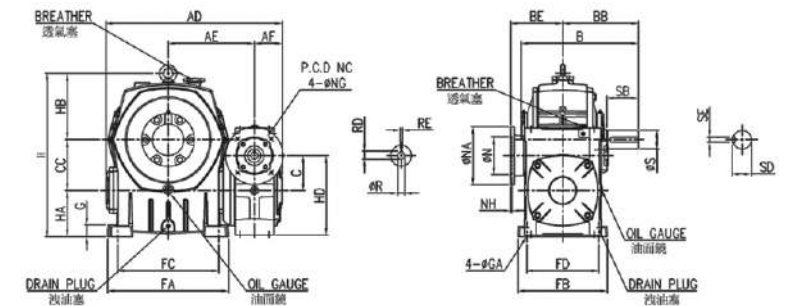
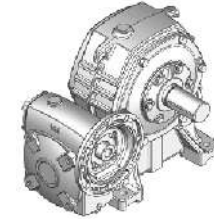
軸配置 Shaft Location



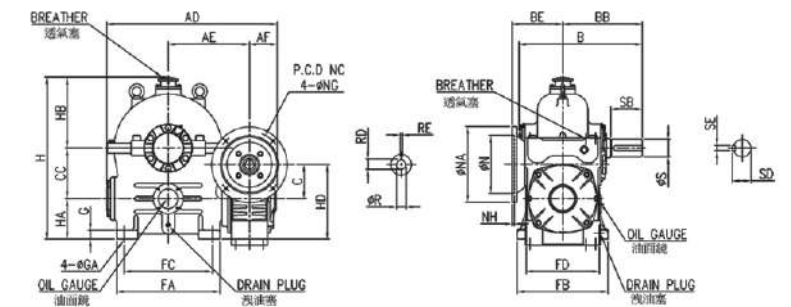
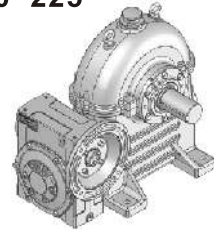
TKBWE 60~135



TKBWE 155~175



TKBWE 200~225



尺寸表 Dimension

規格 Size	減速比 Ratio	AD	AE	AF	B	BB	BE	C	CC	FA	FB	FC	FD	G	GA	H
60	1:100	218	100	43	165	110	85	33.86	60	150	130	120	105	18	11	210
70		261	121	46	195	130	89	40	70	190	150	150	115	20	15	240
80		284	130	50	210	140	85	50	80	220	170	180	135	24	15	270
100		352	165	55	260	170	90	60	100	270	190	220	155	25	15	340
120	1:400	415	195	65	290	190	117	70	120	320	230	260	180	30	18	405
135	1:500	465	220	70	320	210	129	80	135	350	250	290	200	30	18	455
155	1:600	539	257	90	387	252	160	100	155	390	280	320	220	35	20	490
175	1:800	624	299	100	407	262	180	120	175	420	310	350	250	40	20	565
200	1:900	672	322	110	495	315	201	135	200	410	360	350	290	35	22	650
225		735	355	110	520	335	201	135	225	470	410	390	330	40	27	705

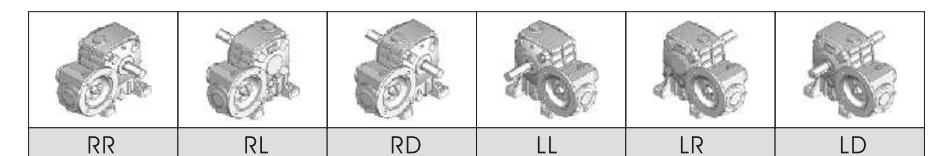
規格 Size	減速比 Ratio	HA	HB	HD	實心出力軸 Solid Output Shaft				油量 (l)		概重 (kg)
					φ S(h)	SB	SD	SE	子機 1st	母機 2nd	
60	1:100	60	90	94	22	50	25	7	0.09	0.27	11.7
70	1:200	70	100	110	28	60	31	7	0.10	0.55	17.0
80		80	110	130	32	65	35	10	0.33	0.73	23.0
100	1:300	100	140	160	38	75	41	10	0.40	1.24	36.0
120	1:400	120	165	190	45	85	48	12	0.78	2.08	64.0
135	1:500	135	185	215	55	95	60	15	1.15	2.75	90.0
155	1:600	135	200	235	60	110	65	15	1.65	3.90	129
175		160	230	280	65	110	69	18	3.82	5.20	189
200	1:800	160	290	295	70	125	74.5	20	5.32	6.60	248
225		180	300	315	80	140	84.5	20	5.32	9.63	267

*入力法蘭界面尺寸請參考D-24頁。 Please reference page D-24 for input flange dimensions.

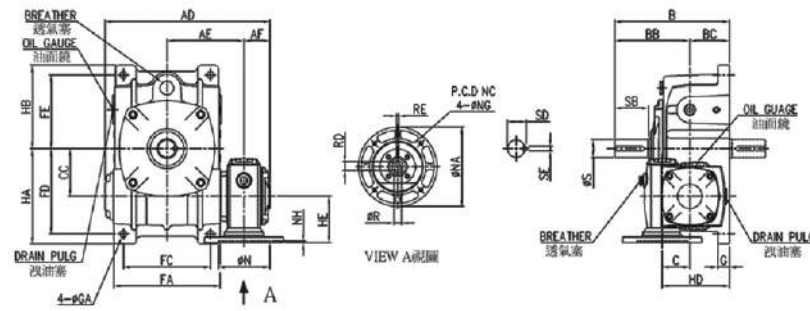
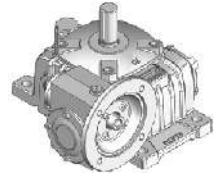
TKBWE 135 - 600 LR - 1HP

- 機型 Type
- 規格 Size
- 速比 Ratio
- 軸配置 S. L.
- 馬力 Power

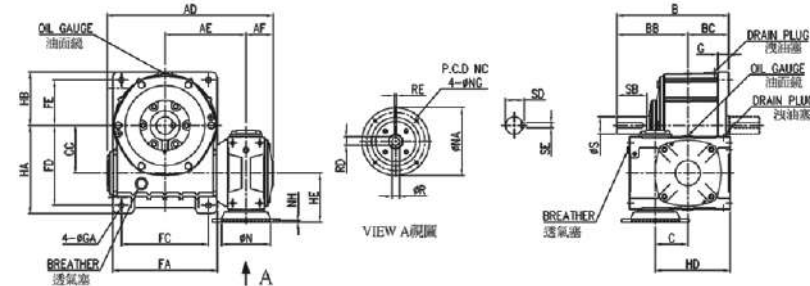
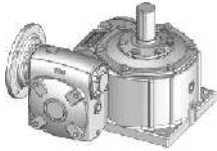
軸配置 Shaft Location



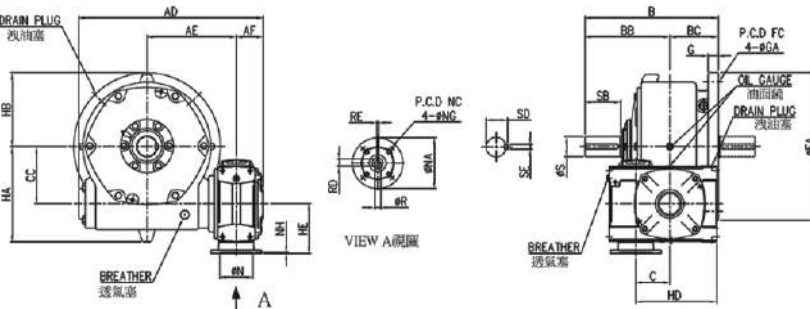
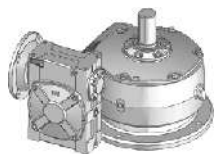
TKVWE 60~135



TKVWE 155~175



TKVWE 200~300



尺寸表 Dimension

規格 Size	減速比 Ratio	AD	AE	AF	B	BB	BC	C	CC	FA	FC	FD	FE	G	GA
60	1:100	218	100	43	165	110	55	33.86	60	126	100	120	105	15	11
70		261	121	46	195	130	65	40	70	156	120	135	120	20	15
80		284	130	50	210	140	70	50	80	176	140	150	130	20	15
100		352	165	55	260	170	90	60	100	226	190	180	155	30	15
120	1:300	415	195	65	290	190	100	70	120	268	220	215	185	30	18
135		465	220	70	320	210	110	80	135	306	260	235	210	35	18
155	1:500	539	257	90	392	252	140	100	155	336	290	265	145	35	20
175	1:600	624	299	100	412	262	150	120	175	380	320	293	167	40	20
200		672	322	110	490	315	175	135	200	510	450	-	-	40	22
225	1:800	735	355	110	525	335	190	135	225	580	510	-	-	40	27
250		822	392	132	560	360	200	155	250	640	570	-	-	42	27
300	1:900	906	425	132	645	410	235	155	300	750	660	-	-	42	36

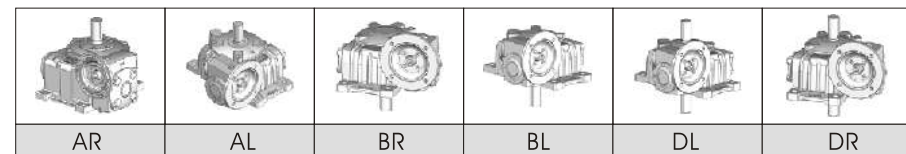
規格 Size	減速比 Ratio	HA	HB	HD	HE	出力軸 Output Shaft				油量(l)		概重 (kg)
						φ S(h6)	SB	SD	SE	子機 1st	母機 2nd	
60	1:100	137	123	89	85	22	50	25	7	0.09	0.70	12.4
70		155	140	110	89	28	60	31	7	0.10	0.95	18.0
80		170	150	120	85	32	65	35	10	0.33	1.45	23.0
100		200	175	150	90	38	75	41	10	0.40	2.50	39.0
120	1:300	240	210	170	117	45	85	48	12	0.78	5.07	69.0
135		260	235	190	129	55	95	60	15	1.15	7.13	97.0
155	1:500	286	170	240	160	60	110	65	15	1.65	7.50	139
175	1:600	324	196	270	180	65	110	69	18	3.82	11.0	203
200		343	255	310	201	70	125	74.5	20	5.32	14.4	263
225	1:800	374	290	325	201	80	140	84.5	20	5.32	19.5	287
250		419	320	320	221	90	155	98	24	5.45	23.8	447
300	1:900	493	375	320	221	95	170	101	28	5.45	33.5	605

*入力法蘭界面尺寸請參考D-24頁。 Please reference page D-24 for input flange dimensions.

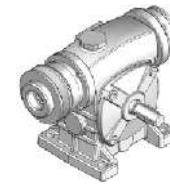
TKVWE 135 - 600 AR - 1HP

- 機型 Type
- 規格 Size
- 速比 Ratio
- 軸配置 S. L.
- 馬力 Power

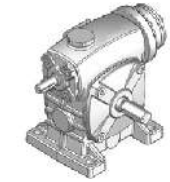
軸配置 Shaft Location



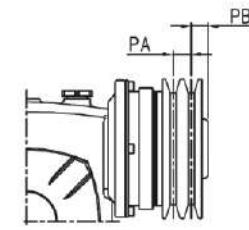
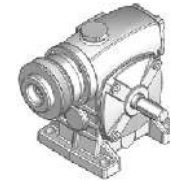
TKAR 50~135



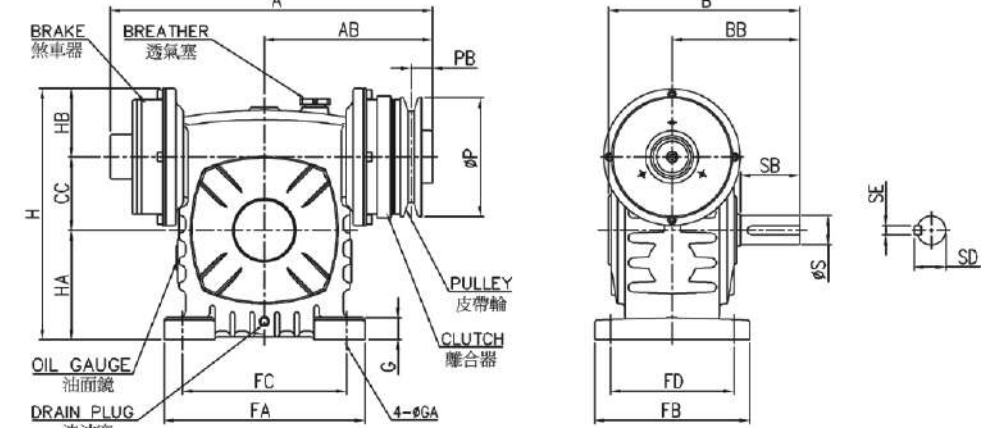
TKAT 50~135



TKAS 50~135



SIZE 120,135



尺寸表 Dimension

規格 Size	減速比 Ratio	B	BB	CC	FA	FB	FC	FD	G	GA	H	HA	HB	實心入力軸 Solid Input Shaft			實心出力軸 Solid Output Shaft			油量 (l)	概重 (kg)		
														I(h6)	IB	ID	IE	S(h6)	SB			SD	SE
50	1:10	145	95	50	140	120	110	95	15	11	180	80	50	12	30	13.5	4	17	40	19	5	0.31	8.5
60	1:15	165	110	60	150	130	120	105	18	11	210	90	60	15	40	17	5	22	50	25	7	0.42	12.8
70	1:20	195	130	70	190	150	150	115	20	15	240	105	65	18	40	20	5	28	60	31	7	0.77	16.0
80	1:30	210	140	80	220	170	180	135	24	15	270	120	70	22	50	25	7	32	65	35	10	1.18	18.0
100	1:40	260	170	100	270	190	220	155	25	15	340	150	90	25	50	28	7	38	75	41	10	2.31	33.0
120	1:50	290	190	120	320	230	260	180	30	18	405	180	105	30	65	33	7	45	85	48	12	3.16	71.0
135	1:60	320	210	135	350	250	290	200	30	18	455	215	105	35	75	38	10	55	95	60	15	4.1	94.0

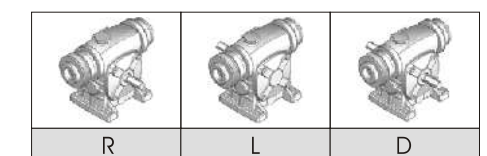
規格 Size	離合器 Clutch			煞車器 Brake			皮帶輪 Pulley			A	B	
	機型 Type	扭矩 Torque kg-m	電壓 Voltage	機型 Type	扭矩 Torque kg-m	電壓 Voltage	機型 Type	直徑 Dia. p	PA			PB
50	06	0.5	DC 24V	06	0.5	DC 24V	A1	76.2 (3")	---	15	241	125
60	06	0.5	DC 24V	06	0.5	DC 24V	A1	76.2 (3")	---	15	251	129
	08	1	DC 24V	08	1	DC 24V	A1	101.6 (4")	---	20	264	139
70	08	1	DC 24V	08	1	DC 24V	A1	101.6 (4")	---	20	293	154
	10	2	DC 24V	10	2	DC 24V	B1	127.0 (5")	---	21	311	162
80	10	2	DC 24V	10	2	DC 24V	B1	127.0 (5")	---	21	333	171
	12	4	DC 24V	12	4	DC 24V	B1	152.4 (6")	---	19	364	188
100	12	4	DC 24V	12	4	DC 24V	B1	152.4 (6")	---	19	420	218
120	16	8	DC 24V	16	8	DC 24V	B2	152.4 (6")	19	19	490	254
135	16	8	DC 24V	16	8	DC 24V	B2	152.4 (6")	19	19	518	268

機型說明: TKAR 50~135 附送電煞車器及離合器 W / Brake & Clutch.
 TKAT 50~135 僅附離合器 W / Clutch only.
 TKAS 50~135 僅附送電煞車器 W / Brake only.

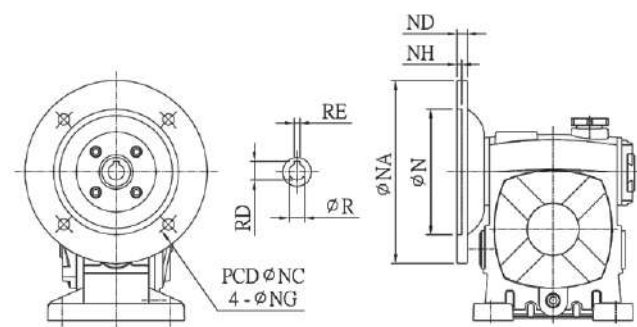
TKAR 70 - 60 R - 08 08 4 A1

- 機型 Type
- 規格 Size
- 速比 Ratio
- 軸配置 S. L.
- 離合器型式 Clutch Type
- 煞車器型式 Brake Type
- 皮帶輪外徑 Pulley Dia
- 皮帶輪型式 Pulley Type

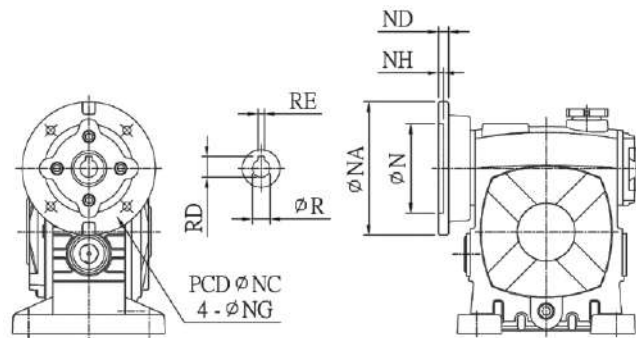
軸配置 Shaft Location



B5入力法蘭 B5 Input Flange



B14入力法蘭 B14 Input Flange



IEC-B5入力法蘭尺寸(代碼E) Input Flange Dimension(Code E)

規格 Size	馬力 Power	框號 Frame	入力軸孔 Input Bore			B5入力法蘭 Input Flange					
			φ R(F8)	RD	RE	φ N(H7)	φ NA	φ NC	ND	φ NG	NH
40	0.25 HP	*D63	11	12.8	4	95	140	115	8	10	4
	0.25 HP	D67				110	160	130	9		
	0.5 HP	D71	14	16.3	5						
50	0.25 HP	*D63	11	12.8	4	95	140	115	8	10	4
	0.25 HP	D67				110	160	130	9		
	0.5 HP	D71	14	16.3	5						
60	0.25 HP	*D63	11	12.8	4	95	140	115	8	10	4
	0.25 HP	D67				110	160	130	9		
	0.5 HP	D71	14	16.3	5						
	1 HP	D80	19	21.8	6	130	200	165	10	12	4
70	0.5 HP	D71	14	16.3	5	110	160	130	10	10	4
	1 HP	D80	19	21.8	6	130	200	165	14	M10	
	2 HP	D90L	24	27.3	8						
80	1 HP	D80	19	21.8	6	130	200	165	14	M10	4
	2 HP	D90L	24	27.3	8						
100	2 HP	D90L	24	27.3	8	130	200	165	15	12	4
	3 HP	D100L	28	31.3	8	180	250	215	16	M12	4.5
	5 HP	D112M									
120	2 HP	D90L	24	27.3	8	130	200	165	16	M10	4
	3 HP	D100L	28	31.3	8	180	250	215	16	M12	
	5 HP	D112M									
135	3 HP	D100L	28	31.3	8	180	250	215	17	M12	5
	5 HP	D112M									
	7.5 HP	D132S	38	41.3	10	230	300	265	20		4.5
155	5 HP	D112M	28	31.3	8	180	250	215	15	M12	4.5
	7.5 HP	D132S	38	41.3	10	230	300	265	20	M12	
	10 HP	D132M									
175	7.5 HP	D132S	38	41.3	10	230	300	265	20	M12	5
	10 HP	D132M									
	15 HP	D160M	42	45.3	12	250	350	300	25	18.5	6

*框號:D63(1/4HP)為歐洲法蘭規格, D67(1/4HP)為亞洲法蘭規格.

European input flange 1/4HP Frame code D63. Asian input flange 1/4HP Frame code D67

IEC-B14入力法蘭尺寸(代碼G) Input Flange Dimension(Code G)

規格 Type	馬力 HP	法蘭 Flange	入力軸孔 Input bore			B14入力法蘭 Input flange					
			φ R(F8)	RD	RE	φ N(H7)	φ NA	φ NC	ND	φ NG	NH
40	1/4 HP	D63	11	12.8	4	60	90	75	8	6	3.5
	1/2 HP	D71	14	16.3	5	70	105	85	8	7	4
50	1/4 HP	D63	11	12.8	4	60	90	75	8	6	3.5
	1/2 HP	D71	14	16.3	5	70	105	85	8	7	4
60	1/4 HP	D63	11	12.8	4	60	90	75	8	6	3.5
	1/2 HP	D71	14	16.3	5	70	105	85	8	7	4
	1 HP	D80	19	21.8	6	80	120	100	10	7	4
70	1/2 HP	D71	14	16.3	5	70	105	85	10	7	4
	1 HP	D80	19	21.8	6	80	120	100	10	7	4
80	1 HP	D80	19	21.8	6	80	120	100	10.5	7	4
	2 HP	D90	24	27.3	8	95	140	115	10.5	9	4.5
100	3 HP	D100	28	41.3	10	110	160	130	11	9	4.0
120	3 HP	D100	28	41.3	10	110	160	130	12	9	4.0

單段直結型馬力配比表 Single reduction rating

規格	減速比	1/5	1/10	1/15	1/20	1/30	1/40	1/50	1/60
40		1/2 HP			1/4 HP				
50		1/2 HP				1/4 HP			
60		1/2 HP (1 HP)			1/2 HP, 1/4 HP				
70		1 HP (2 HP)		1 HP			1/2 HP (1 HP)		
80		2 HP				1 HP			
100		3 HP (5 HP)			3 HP		2 HP		
120		5 HP				3 HP		2 HP	
135		7.5 HP				5 HP		3 HP	
155		10 HP				7.5 HP		5 HP	
175		15 HP				10 HP		7.5 HP	

雙段直結型馬力配比表 Double reduction rating

規格	減速比	1/100	1/200	1/300	1/400	1/500	1/600	1/800	1/900
34 x 60		1/4 HP							
40 x 70		1/2 HP		1/4 HP					
50 x 80		1/4 HP			1/4 HP				
60 x 100		1 HP		1/2 HP		1/4 HP			
70 x 120		1 HP			1/2 HP				
80 x 135		2 HP			1 HP				
100 x 155		5 HP		3 HP		2 HP			
120 x 175		5 HP			3 HP			2 HP	
135 x 200		7.5 HP		5 HP		3 HP			
135 x 225		7.5 HP				5 HP			
155 x 250		10 HP			7.5 HP				
155 x 300		10 HP				7.5 HP			

以上馬力配比以安全系數SF=1.0為主. Above capacity based on safety factor 1.0

特性表-單段實心入力軸 Ratings for solid input shaft

規格 Size	速比 Ratio	1800 RPM				1500 RPM				1200 RPM				900 RPM				600 RPM				300 RPM			
		HP ₁	HP ₂	O.T	O.H.L	HP ₁	HP ₂	O.T	O.H.L	HP ₁	HP ₂	O.T	O.H.L	HP ₁	HP ₂	O.T	O.H.L	HP ₁	HP ₂	O.T	O.H.L	HP ₁	HP ₂	O.T	O.H.L
40	1/10	0.83	0.65	2.60	70	0.77	0.60	2.80	70	0.67	0.51	3.10	70	0.56	0.42	3.40	70	0.43	0.32	3.80	70	0.23	0.16	3.80	70
	1/15	0.70	0.54	3.00	70	0.62	0.48	3.10	70	0.35	0.27	2.40	70	0.28	0.22	2.60	70	0.24	0.19	3.00	70	0.13	0.10	3.30	70
	1/20	0.38	0.27	2.10	70	0.34	0.24	2.30	70	0.30	0.21	2.50	70	0.26	0.17	2.80	70	0.20	0.13	3.10	70	0.13	0.08	3.70	70
	1/30	0.43	0.28	3.30	70	0.40	0.25	3.50	70	0.34	0.21	3.80	70	0.27	0.16	3.80	70	0.20	0.11	3.80	70	0.10	0.05	3.80	70
	1/40	0.26	0.15	2.50	70	0.24	0.14	2.60	70	0.21	0.12	2.80	70	0.18	0.10	3.10	70	0.14	0.07	3.40	70	0.09	0.04	3.80	70
	1/50	0.25	0.14	2.80	70	0.23	0.12	3.00	70	0.20	0.11	3.20	70	0.17	0.09	3.50	70	0.13	0.06	3.80	70	0.07	0.03	3.80	70
	1/60	0.20	0.10	2.40	70	0.19	0.09	2.60	70	0.16	0.08	2.70	70	0.14	0.06	5.00	70	0.11	0.05	3.20	70	0.07	0.03	3.80	70
50	1/10	1.44	1.15	4.59	100	1.31	1.03	4.94	107	1.16	0.90	5.40	115	0.89	0.68	5.43	120	0.60	0.45	5.43	140	0.31	0.23	5.43	200
	1/15	1.07	0.81	4.89	115	0.97	0.73	5.22	120	0.82	0.60	5.43	130	0.63	0.45	5.43	140	0.43	0.30	5.43	160	0.22	0.15	5.43	200
	1/20	0.65	0.48	3.85	130	0.58	0.43	4.13	140	0.51	0.37	4.48	155	0.43	0.31	4.94	170	0.32	0.22	5.43	200	0.17	0.12	5.43	200
	1/30	0.68	0.45	5.43	150	0.58	0.37	5.43	170	0.48	0.30	5.43	180	0.37	0.22	5.43	200	0.26	0.15	5.43	200	0.14	0.07	5.43	200
	1/40	0.44	0.28	4.50	170	0.40	0.25	4.80	180	0.35	0.21	5.16	200	0.28	0.17	5.43	200	0.20	0.11	5.43	200	0.10	0.05	5.43	200
	1/50	0.39	0.23	4.55	200	0.35	0.20	4.94	200	0.31	0.17	5.29	200	0.24	0.13	5.43	200	0.17	0.09	5.43	200	0.09	0.04	5.43	200
	1/60	0.31	0.18	4.35	200	0.28	0.16	4.60	200	0.24	0.13	4.87	200	0.21	0.11	5.34	200	0.15	0.07	5.43	200	0.08	0.03	5.43	200
60	1/10	2.32	1.87	7.44	98	2.08	1.66	7.95	104	1.88	1.47	8.80	110	1.57	1.21	9.68	121	1.23	0.93	11.1	140	0.66	0.48	11.6	200
	1/15	1.72	1.32	7.91	116	1.55	1.18	8.46	123	1.36	1.01	9.07	133	1.17	0.85	10.2	145	0.9	0.64	11.5	167	0.48	0.32	11.6	200
	1/20	1.21	0.89	7.15	138	1.10	0.80	7.66	146	0.98	0.69	8.31	157	0.83	0.57	9.16	172	0.65	0.43	10.4	200	0.38	0.24	11.6	200
	1/30	1.14	0.78	9.31	151	1.05	0.70	10.0	159	0.92	0.59	10.6	172	0.78	0.48	11.6	189	0.54	0.32	11.6	200	0.29	0.16	11.6	200
	1/40	0.82	0.52	8.27	178	0.75	0.46	8.83	189	0.67	0.39	9.49	200	0.58	0.32	10.4	200	0.45	0.24	11.6	200	0.25	0.12	11.6	200
	1/50	0.77	0.49	9.70	200	0.70	0.43	10.2	200	0.62	0.37	11.0	200	0.40	0.23	9.22	200	0.31	0.17	10.3	200	0.19	0.09	11.6	200
	1/60	0.64	0.38	9.20	200	0.58	0.34	9.70	200	0.51	0.29	10.4	200	0.43	0.24	11.3	200	0.25	0.13	9.52	200	0.14	0.07	11.2	200
70	1/10	3.48	2.82	11.20	128	3.11	2.50	11.9	136	2.77	2.20	13.1	145	2.23	1.81	14.4	159	1.85	1.41	16.9	180	1.20	0.88	21.1	228
	1/15	2.53	1.96	11.7	153	2.29	1.76	12.6	161	2.02	1.52	13.6	174	1.73	1.28	15.2	190	1.34	0.96	17.3	218	0.87	0.59	21.4	277
	1/20	1.93	1.47	11.7	178	1.75	1.31	12.5	188	1.55	1.14	13.6	202	1.31	0.94	15.0	222	1.02	0.71	17.1	255	0.65	0.43	20.6	300
	1/30	1.69	1.16	13.8	198	1.55	1.05	15.0	208	1.36	0.89	16.1	225	1.18	0.74	17.7	247	0.92	0.56	20.1	284	0.59	0.33	23.8	300
	1/40	1.24	0.82	13.1	233	1.13	0.73	14.0	247	1.01	0.63	15.0	266	0.86	0.51	16.5	293	0.67	0.39	18.6	300	0.43	0.23	21.9	300
	1/50	1.12	0.72	14.3	266	1.03	0.64	15.2	282	0.91	0.55	16.3	300	0.77	0.45	17.8	300	0.60	0.33	19.7	300	0.39	0.19	23.2	300
	1/60	0.94	0.58	13.9	289	0.86	0.51	14.6	300	0.76	0.43	15.6	300	0.65	0.36	17.0	300	0.50	0.26	18.6	300	0.32	0.15	22.0	300
80	1/10	4.93	4.01	15.9	180	4.43	3.58	17.0	191	3.89	3.12	18.6	204	3.30	2.59	20.6	224	2.63	2.02	24.1	254	1.70	1.26	30.1	321
	1/15	3.57	2.79	16.7	215	3.21	2.49	17.8	228	2.83	2.17	19.4	244	2.44	1.81	21.7	267	1.90	1.38	24.7	306	1.24	0.85	30.7	388
	1/20	2.53	1.90	15.1	253	2.30	1.71	16.3	267	2.04	1.49	17.8	287	1.73	1.22	19.5	316	1.37	0.93	22.4	362	0.89	0.57	27.2	400
	1/30	2.38	1.66	19.8	277	2.15	1.47	21.1	294	1.90	1.28	22.9	316	1.65	1.06	25.3	345	1.31	0.80	28.7	398	0.84	0.47	34.0	400
	1/40	1.70	1.10	17.5	326	1.54	0.98	18.7	347	1.38	0.85	20.4	372	1.19	0.69	22.2	400	0.94	0.52	25.0	400	0.62	0.31	29.8	400
	1/50	1.57	1.01	20.1	364	1.43	0.90	21.6	385	1.28	0.77	23.1	400	1.09	0.63	25.1	400	0.85	0.47	28.0	400	0.55	0.28	33.0	400
	1/60	1.29	0.79	18.9	400	1.18	0.71	20.4	400	1.05	0.60	21.6	400	0.91	0.50	23.7	400	0.70	0.36	26.0	400	0.46	0.21	30.8	400
100	1/10	8.73	7.18	28.5	167	7.93	6.46	30.8	177	6.93	5.6	33.4	190	5.87	4.69	37.3	207	4.68	3.65	43.3	235	2.79	2.09	50.0	297
	1/15	6.34	5.02	29.9	204	5.66	4.43	31.7	217	5.09	3.94	35.3	230	4.33	3.29	39.3	251	3.38	2.48	44.5	289	1.99	1.39	50.0	365
	1/20	5.02	3.93	31.2	239	4.57	3.54	33.8	252	4.03	3.09	36.9	269	3.40	2.53	40.3	297	2.67	1.93	46.2	240	1.52	1.04	50.0	435
	1/30	4.20	3.00	35.8	265	3.81	2.66	38.2	281	3.35	2.30	41.1	302	2.89	1.92	46.0	330	2.23	1.39	50.0	382	1.20	0.69	50.0	500
	1/40	3.17	2.20	35.1	316	2.86	1.96	37.4	336	2.54	1.71	40.9	359	2.03	1.28	46.0	397	1.71	1.04	50.0	458	0.92	0.52	50.0	500
	1/50	2.39	1.59	31.8	364	2.17	1.42	34.0	386	1.93	1.24	37.0	415	1.66	1.01	40.2	458	1.29	0.75	44.7	500	0.79	0.41	50.0	500
	1/60	1.96	1.27	30.4	400	1.79	1.14	32.7	424	1.59	0.97	34.9	458	1.37	0.79	38.1	500	1.05	0.58	42.0	500	0.68	0.34	49.8	500
120	1/10	13.8	11.4	45.7	177	12.6	10.4	49.6	184	11.0	9.02	53.8	198	9.38	7.55	60.1	214	7.46	5.86	69.9	241	4.64	3.51	84.0	305
	1/15	10.0	8.05	48.0	218	9.02	7.15	51.2	231	8.08	6.32	56.5	244	6.83	5.26	62.8	267	5.39	4.01	71.9	305	3.30	2.34	84.0	386
	1/20	7.16	5.54	44.0	270	6.49	4.97	47.4	285	5.72	4.30	51.3	306	4.85	3.58	57.0	335	3.87	2.74	65.4	383	2.53	1.69	80.7	488
	1/30	6.66	4.82	57.5	285	6.00	4.28	61.3	302	5.31	3.70	66.3	325	4.55	3.09	73.9	354	3.65	2.34	83.9	408	1.97	1.17	84.0	531
	1/40	4.68	3.19	50.7	357	4.19	2.81	53.6	380	3.77	2.45	58.5	407	3.24	2.03	64.8	446	2.62	1.53	73.3	514	1.64	0.88	84.0	665
	1/50	3.93	2.74	54.5	404	3.54	2.43	58.0	429	3.15	2.12	63.4	459	2.69	1.72	68.7	508	2.09	1.28	76.5	588	1.24	0.70	84.0	700
	1/60	3.14	2.04	48.9	453	2.84	1.81	51.9	481	2.52	1.56	56.2	518	2.17	1.28	61.3	571	1.70	0.94	67.5	662	1.12	0.56	81.1	700
135	1/10	19.8	16.5	66.0	304	18.0	15.0	71.7	319	15.8	13.0	77.7	342	13.3	10.9	86.8	372	10.6	8.46	101	421	6.87	5.30	126	533
	1/15	14.7	11.9	71.4	362	13.1	10.6	76.1	384	11.8	9.38	84.0	407	9.95	7.82	93.3	445	7.83	5.96	106	510	5.11	3.73	133	644
	1/20	11.3	9.11	72.5	426	10.3	8.19	78.2	449	8.97	7.03	83.9	484	7.69	5.92	94.3	528	6.05	4.51	107	605	3.88	2.76	131	772
	1/30	9.68	7.21	86.0	468	8.71	6.40	91.7	496	7.70	5.53	99.1	533	6.58	4.62	110	583	5.24	3.50	125	670	3.13	1.95	140	866
	1/40	6.98																							

特性表-雙段實心入力軸 Ratings for double reduction solid input shaft

規格 Size	速比 Ratio	1800 RPM				1500 RPM				1200 RPM				900 RPM				600 RPM				
		HP ₁	HP ₂	O.T	O.H.L	HP ₁	HP ₂	O.T	O.H.L	HP ₁	HP ₂	O.T	O.H.L	HP ₁	HP ₂	O.T	O.H.L	HP ₁	HP ₂	O.T	O.H.L	
60	1/200	0.32	0.13	11.6	200	0.27	0.12	11.6	200	0.21	0.08	11.6	200	0.16	0.07	11.6	200	0.12	0.04	11.6	200	
	1/300	0.23	0.08	11.6	200	0.20	0.08	11.6	200	0.16	0.05	11.6	200	0.12	0.04	11.6	200	0.08	0.03	11.6	200	
	1/400	0.19	0.07	11.6	200	0.16	0.05	11.6	200	0.12	0.04	11.6	200	0.10	0.03	11.6	200	0.07	0.01	11.6	200	
	1/500	0.16	0.04	11.6	200	0.13	0.04	11.6	200	0.12	0.03	11.6	200	0.08	0.01	11.6	200	0.05	0.01	11.6	200	
	1/600	0.13	0.04	11.6	200	0.12	0.04	11.6	200	0.10	0.03	11.6	200	0.08	0.01	11.6	200	0.05	0.01	11.6	200	
	1/800	0.12	0.03	11.6	200	0.11	0.03	11.6	200	0.08	0.01	11.6	200	0.07	0.01	11.6	200	0.04	0.01	11.6	200	
	1/900	0.11	0.03	11.6	200	0.10	0.01	11.6	200	0.08	0.01	11.6	200	0.05	0.01	11.6	200	0.04	0.01	11.6	200	
	1/1000	0.06	0.03	11.6	200	0.05	0.024	11.6	200	0.04	0.02	11.6	200	0.03	0.015	11.6	200	0.03	0.01	11.6	200	
	1/1200	0.06	0.025	11.6	200	0.05	0.020	11.6	200	0.04	0.016	11.6	200	0.03	0.012	11.6	200	0.02	0.008	11.6	200	
	1/1500	0.05	0.02	11.6	200	0.04	0.016	11.6	200	0.03	0.013	11.6	200	0.03	0.01	11.6	200	0.02	0.007	11.6	200	
	1/1800	0.05	0.018	11.6	200	0.04	0.014	11.6	200	0.03	0.011	11.6	200	0.02	0.008	11.6	200	0.02	0.006	11.6	200	
	1/2400	0.04	0.012	11.6	200	0.03	0.010	11.6	200	0.03	0.008	11.6	200	0.02	0.006	11.6	200	0.02	0.004	11.6	200	
	1/3000	0.03	0.01	11.6	200	0.02	0.008	11.6	200	0.02	0.007	11.6	200	0.02	0.005	11.6	200	0.01	0.003	11.6	200	
	1/3600	0.03	0.008	11.6	200	0.02	0.007	11.6	200	0.02	0.006	11.6	200	0.02	0.004	11.6	200	0.01	0.003	11.6	200	
	70	1/200	0.63	0.31	25.0	300	0.52	0.25	25.0	300	0.41	0.20	25.0	300	0.32	0.15	25.0	300	0.23	0.09	25.0	300
		1/300	0.44	0.20	25.0	300	0.36	0.16	25.0	300	0.28	0.12	25.0	300	0.23	0.09	25.0	300	0.13	0.05	25.0	300
1/400		0.36	0.15	25.0	300	0.31	0.12	25.0	300	0.24	0.09	25.0	300	0.17	0.07	25.0	300	0.12	0.04	25.0	300	
1/500		0.31	0.12	25.0	300	0.24	0.09	25.0	300	0.20	0.08	25.0	300	0.16	0.05	25.0	300	0.11	0.04	25.0	300	
1/600		0.25	0.09	25.0	300	0.20	0.08	25.0	300	0.15	0.05	25.0	300	0.12	0.04	25.0	300	0.08	0.01	25.0	300	
1/800		0.24	0.07	25.0	300	0.19	0.05	25.0	300	0.16	0.04	25.0	300	0.09	0.03	25.0	300	0.07	0.01	25.0	300	
1/900		0.24	0.05	25.0	300	0.15	0.04	25.0	300	0.12	0.04	25.0	300	0.09	0.03	25.0	300	0.07	0.01	25.0	300	
1/1000		0.13	0.063	25.0	300	0.11	0.053	25.0	300	0.09	0.042	25.0	300	0.07	0.032	25.0	300	0.05	0.021	25.0	300	
1/1200		0.12	0.053	25.0	300	0.11	0.044	25.0	300	0.09	0.035	25.0	300	0.07	0.026	25.0	300	0.05	0.018	25.0	300	
1/1500		0.10	0.042	25.0	300	0.09	0.035	25.0	300	0.07	0.028	25.0	300	0.06	0.021	25.0	300	0.04	0.014	25.0	300	
1/1800		0.09	0.035	25.0	300	0.08	0.030	25.0	300	0.06	0.023	25.0	300	0.05	0.018	25.0	300	0.04	0.012	25.0	300	
1/2400		0.08	0.026	25.0	300	0.07	0.022	25.0	300	0.06	0.018	25.0	300	0.04	0.013	25.0	300	0.04	0.009	25.0	300	
1/3000		0.06	0.021	25.0	300	0.05	0.018	25.0	300	0.04	0.014	25.0	300	0.03	0.010	25.0	300	0.02	0.007	25.0	300	
1/3600		0.06	0.018	25.0	300	0.05	0.015	25.0	300	0.04	0.012	25.0	300	0.03	0.009	25.0	300	0.02	0.006	25.0	300	
80		1/200	0.89	0.41	33.8	400	0.64	0.36	35.0	400	0.53	0.28	35.0	400	0.40	0.20	35.0	400	0.28	0.13	35.0	400
		1/300	0.64	0.28	35.0	400	0.45	0.24	35.0	400	0.37	0.19	35.0	400	0.28	0.13	35.0	400	0.19	0.08	35.0	400
	1/400	0.53	0.20	35.0	400	0.36	0.17	35.0	400	0.28	0.13	35.0	400	0.21	0.09	35.0	400	0.16	0.07	35.0	400	
	1/500	0.44	0.16	35.0	400	0.29	0.13	35.0	400	0.24	0.11	35.0	400	0.17	0.08	35.0	400	0.12	0.04	35.0	400	
	1/600	0.39	0.13	35.0	400	0.27	0.12	35.0	400	0.20	0.08	35.0	400	0.16	0.07	35.0	400	0.09	0.04	35.0	400	
	1/800	0.45	0.09	35.0	400	0.28	0.08	35.0	400	0.23	0.07	35.0	400	0.16	0.04	35.0	400	0.11	0.03	35.0	400	
	1/900	0.29	0.08	35.0	400	0.21	0.08	35.0	400	0.16	0.05	35.0	400	0.12	0.04	35.0	400	0.08	0.03	35.0	400	
	1/1000	0.18	0.088	35.0	400	0.16	0.073	35.0	400	0.13	0.06	35.0	400	0.10	0.044	35.0	400	0.08	0.03	35.0	400	
	1/1200	0.17	0.073	35.0	400	0.15	0.061	35.0	400	0.12	0.05	35.0	400	0.10	0.037	35.0	400	0.07	0.024	35.0	400	
	1/1500	0.14	0.060	35.0	400	0.12	0.050	35.0	400	0.10	0.04	35.0	400	0.08	0.030	35.0	400	0.06	0.020	35.0	400	
	1/1800	0.13	0.050	35.0	400	0.11	0.042	35.0	400	0.09	0.32	35.0	400	0.07	0.024	35.0	400	0.05	0.016	35.0	400	
	1/2400	0.11	0.037	35.0	400	0.09	0.030	35.0	400	0.08	0.24	35.0	400	0.06	0.018	35.0	400	0.05	0.012	35.0	400	
	1/3000	0.08	0.030	35.0	400	0.07	0.024	35.0	400	0.06	0.020	35.0	400	0.05	0.015	35.0	400	0.04	0.010	35.0	400	
	1/3600	0.07	0.024	35.0	400	0.06	0.020	35.0	400	0.06	0.016	35.0	400	0.04	0.012	35.0	400	0.03	0.008	35.0	400	
	100	1/200	1.16	0.61	50.0	650	0.95	0.52	50.0	650	0.76	0.40	50.0	650	0.60	0.31	50.0	650	0.40	0.20	50.0	650
		1/300	0.84	0.40	50.0	650	0.67	0.33	50.0	650	0.53	0.27	50.0	650	0.41	0.20	50.0	650	0.28	0.12	50.0	650
1/400		0.67	0.31	50.0	650	0.52	0.25	50.0	650	0.40	0.20	50.0	650	0.32	0.15	50.0	650	0.23	0.09	50.0	650	
1/500		0.57	0.24	50.0	650	0.41	0.20	50.0	650	0.35	0.16	50.0	650	0.27	0.12	50.0	650	0.19	0.08	50.0	650	
1/600		0.49	0.20	50.0	650	0.39	0.16	50.0	650	0.31	0.12	50.0	650	0.24	0.09	50.0	650	0.16	0.05	50.0	650	
1/800		0.52	0.15	50.0	650	0.40	0.12	50.0	650	0.32	0.09	50.0	650	0.24	0.07	50.0	650	0.17	0.04	50.0	650	
1/900		0.41	0.12	50.0	650	0.31	0.11	50.0	650	0.27	0.08	50.0	650	0.19	0.05	50.0	650	0.12	0.04	50.0	650	
1/1000		0.25	0.12	50.0	650	0.21	0.10	50.0	650	0.19	0.08	50.0	650	0.15	0.063	50.0	650	0.11	0.042	50.0	650	
1/1200		0.24	0.10	50.0	650	0.20	0.09	50.0	650	0.18	0.07	50.0	650	0.14	0.05	50.0	650	0.10	0.035	50.0	650	
1/1500		0.19	0.08	50.0	650	0.17	0.07	50.0	650	0.15	0.06	50.0	650	0.11	0.04	50.0	650	0.08	0.028	50.0	650	
1/1800		0.18	0.07	50.0	650	0.16	0.06	50.0	650	0.14	0.05	50.0	650	0.10	0.035	50.0	650	0.07	0.023	50.0	650	
1/2400		0.15	0.05	50.0	650	0.13	0.044	50.0	650	0.11	0.035	50.0	650	0.09	0.026	50.0	650	0.07	0.018	50.0	650	
1/3000		0.11	0.04	50.0	650	0.10	0.035	50.0	650	0.09	0.03	50.0	650	0.07	0.020	50.0	650	0.05	0.014	50.0	650	
1/3600		0.11	0.035	50.0	650	0.10	0.030	50.0	650	0.08	0.02	50.0	650	0.07	0.018	50.0	650	0.05	0.012	50.0	650	

HP₁: 輸入馬力 Input HP. HP₂: 輸出馬力 Output HP.
O.T.: 輸出扭矩 Output Torque (kg-m) O.H.L.: 懸垂荷重 Overhung Load (kgf).

特性表-雙段實心入力軸 Ratings for double reduction solid input shaft

規格 Size	速比 Ratio	1800 RPM				1500 RPM				1200 RPM				900 RPM				600 RPM			
		HP ₁	HP ₂	O.T	O.H.L	HP ₁	HP ₂	O.T	O.H.L	HP ₁	HP ₂	O.T	O.H.L	HP ₁	HP ₂	O.T	O.H.L	HP ₁	HP ₂	O.T	O.H.L
120	1/200	2.04	1.04	84.0	618	1.72	0.87	84.0	675	1.44	0.69	84.0	749	1.11	0.52	84.0	854	0.79	0.35	84.0	1000
	1/300	1.47	0.69	84.0	749	1.24	0.57	84.0	814	1.01	0.45	84.0	899	0.81	0.35	84.0	1000	0.56	0.33	84.0	1000
	1/400	1.15	0.52	84.0	854	0.96	0.43	84.0	925	0.81	0.35	84.0	1000	0.64	0.25	84.0	1000	0.44	0.16	84.0	1000
	1/500	0.96	0.41	84.0	942																

特性表-雙段實心入力軸 Ratings for double reduction solid input shaft

規格 Size	速比 Ratio	1800 RPM				1500 RPM				1200 RPM				900 RPM				600 RPM			
		HP ₁	HP ₂	O.T	O.H.L	HP ₁	HP ₂	O.T	O.H.L	HP ₁	HP ₂	O.T	O.H.L	HP ₁	HP ₂	O.T	O.H.L	HP ₁	HP ₂	O.T	O.H.L
200	1/200	9.81	5.71	454	2200	8.76	5.01	480	2200	7.28	4.08	488	2200	5.65	3.05	488	2200	3.96	2.04	448	2200
	1/300	7.39	4.08	488	2200	6.31	3.40	480	2200	5.20	2.72	488	2200	4.00	2.04	488	2200	2.84	1.36	448	2200
	1/400	5.76	3.05	488	2200	4.91	2.55	480	2200	4.01	2.04	488	2200	3.13	1.52	488	2200	2.21	1.01	448	2200
	1/500	4.76	2.44	488	2200	4.04	2.04	480	2200	3.32	1.63	488	2200	2.59	1.21	488	2200	1.81	0.80	448	2200
	1/600	4.24	2.04	488	2200	3.61	1.69	480	2200	3.01	1.36	488	2200	2.35	1.01	488	2200	1.68	0.68	448	2200
	1/800	3.32	1.52	488	2200	2.85	1.27	480	2200	2.36	1.01	488	2200	1.83	0.76	488	2200	1.65	0.51	448	2200
	1/900	3.25	1.31	488	2200	2.80	1.08	480	2200	2.33	0.87	488	2200	1.20	0.43	488	2200	1.33	0.44	448	2200
	1/1000	2.50	1.227	488	2200	2.17	1.022	488	2200	1.82	0.818	488	2200	1.43	0.614	488	2200	1.02	0.409	488	2200
	1/1200	2.43	1.022	488	2200	1.10	0.852	488	2200	1.75	0.682	488	2200	1.38	0.511	488	2200	1.01	0.341	488	2200
	1/1500	1.95	0.818	488	2200	1.60	0.682	488	2200	1.40	0.545	488	2200	1.11	0.409	488	2200	0.80	0.273	488	2200
	1/1800	1.75	0.682	488	2200	1.49	0.566	488	2200	1.25	0.450	488	2200	1.00	0.341	488	2200	0.75	0.225	488	2200
	1/2400	1.50	0.511	488	2200	1.29	0.426	488	2200	1.10	0.341	488	2200	0.88	0.256	488	2200	0.66	0.171	488	2200
1/3000	1.08	0.409	488	2200	0.92	0.341	488	2200	0.80	0.273	488	2200	0.64	0.205	488	2200	0.46	0.137	488	2200	
1/3600	1.07	0.341	488	2200	0.91	0.284	488	2200	0.78	0.225	488	2200	0.63	0.171	488	2200	0.46	0.116	488	2200	
225	1/200	14.3	8.45	650	2500	12.8	7.44	685	2500	10.4	5.99	690	2500	8.13	4.48	690	2500	5.64	2.99	690	2500
	1/300	10.7	5.96	690	2500	9.08	4.97	690	2500	7.43	3.97	690	2500	5.76	2.97	690	2500	4.04	1.99	690	2500
	1/400	8.03	4.32	690	2500	6.81	3.60	690	2500	5.61	2.88	690	2500	4.36	2.16	690	2500	3.08	1.44	690	2500
	1/500	6.61	3.45	690	2500	5.64	2.88	690	2500	4.65	2.31	690	2500	3.61	1.72	690	2500	2.56	1.15	690	2500
	1/600	6.15	2.97	690	2500	5.24	2.48	690	2500	4.31	1.99	690	2500	3.40	1.48	690	2500	2.36	0.99	690	2500
	1/800	4.66	2.16	690	2500	3.96	1.80	690	2500	3.31	1.44	690	2500	2.59	1.08	690	2500	1.84	0.72	690	2500
	1/900	4.70	1.99	690	2500	4.01	1.65	690	2500	3.31	1.32	690	2500	2.63	0.99	690	2500	1.84	0.65	690	2500
	1/1000	3.54	1.734	690	2500	3.07	1.445	690	2500	2.57	1.156	690	2500	2.02	0.867	690	2500	1.45	0.578	690	2500
	1/1200	3.44	1.445	690	2500	3.01	1.205	690	2500	2.47	0.964	690	2500	1.95	0.723	690	2500	1.44	0.482	690	2500
	1/1500	2.75	1.156	690	2500	2.35	0.964	690	2500	1.98	0.771	690	2500	1.72	0.578	690	2500	1.14	0.386	690	2500
	1/1800	2.47	0.964	690	2500	2.11	0.800	690	2500	1.77	0.636	690	2500	1.42	0.482	690	2500	1.06	0.318	690	2500
	1/2400	2.13	0.723	690	2500	1.82	0.602	690	2500	1.56	0.482	690	2500	1.25	0.362	690	2500	0.93	0.421	690	2500
1/3000	1.52	0.578	690	2500	1.30	0.482	690	2500	1.14	0.386	690	2500	0.90	0.289	690	2500	0.64	0.193	690	2500	
1/3600	1.51	0.482	690	2500	1.29	0.401	690	2500	1.10	0.318	690	2500	0.89	0.241	690	2500	0.64	0.164	690	2500	
250	1/200	17.9	10.8	850	2700	15.2	8.99	850	2700	12.4	7.19	850	2700	9.58	5.39	850	2700	6.64	3.58	850	2700
	1/300	12.7	7.19	850	2700	10.7	5.99	850	2700	8.76	4.79	850	2700	6.80	3.59	850	2700	4.74	2.39	850	2700
	1/400	9.73	5.33	850	2700	8.25	4.44	850	2700	6.76	3.56	850	2700	5.27	2.67	850	2700	4.90	2.36	850	2700
	1/500	8.08	4.27	850	2700	6.84	3.56	850	2700	5.61	2.84	850	2700	4.40	2.12	850	2700	3.08	1.41	850	2700
	1/600	7.19	3.59	850	2700	5.16	2.52	850	2700	5.03	2.39	850	2700	3.95	1.79	850	2700	2.76	1.19	850	2700
	1/800	5.64	2.67	850	2700	4.79	2.21	850	2700	3.95	1.77	850	2700	3.08	1.32	850	2700	2.17	0.88	850	2700
	1/900	5.87	2.44	850	2700	5.00	2.04	850	2700	4.11	1.63	850	2700	3.27	1.21	850	2700	2.85	0.80	850	2700
	1/1000	4.36	2.136	850	2700	3.79	1.781	850	2700	3.17	1.425	850	2700	2.48	1.068	850	2700	1.78	0.712	850	2700
	1/1200	4.24	1.781	850	2700	3.71	1.484	850	2700	3.04	1.187	850	2700	2.41	0.891	850	2700	1.77	0.594	850	2700
	1/1500	3.39	1.424	850	2700	2.90	1.187	850	2700	2.44	0.950	850	2700	1.92	0.712	850	2700	1.40	0.475	850	2700
	1/1800	3.04	1.187	850	2700	2.59	0.985	850	2700	2.18	0.784	850	2700	1.75	0.594	850	2700	1.31	0.392	850	2700
	1/2400	2.62	0.890	850	2700	2.25	0.742	850	2700	1.92	0.594	850	2700	1.53	0.445	850	2700	1.14	0.297	850	2700
1/3000	1.87	0.712	850	2700	1.61	0.594	850	2700	1.40	0.475	850	2700	1.12	0.356	850	2700	0.80	0.238	850	2700	
1/3600	1.86	0.594	850	2700	1.60	0.494	850	2700	1.36	0.392	850	2700	1.10	0.297	850	2700	0.80	0.202	850	2700	
300	1/200	21.0	12.9	1012	3800	18.5	11.2	1059	3800	16.0	9.46	1122	3800	13.2	7.60	1195	3800	9.20	5.07	1200	3800
	1/300	16.4	9.45	1122	3800	14.5	8.27	1170	3800	12.1	6.80	1200	3800	9.47	5.07	1200	3800	6.53	3.33	1200	3800
	1/400	13.6	7.60	1197	3800	11.5	6.27	1200	3800	9.30	5.07	1200	3800	7.33	3.73	1200	3800	5.20	2.53	1200	3800
	1/500	10.9	5.87	1200	3800	9.33	4.93	1200	3800	7.60	4.00	1200	3800	6.00	2.93	1200	3800	4.27	2.00	1200	3800
	1/600	10.0	5.06	1200	3800	8.53	4.27	1200	3800	6.93	3.33	1200	3800	5.47	2.53	1200	3800	3.87	1.73	1200	3800
	1/800	7.86	3.73	1200	3800	6.66	3.20	1200	3800	5.47	2.53	1200	3800	4.27	1.87	1200	3800	3.07	1.20	1200	3800
	1/900	7.60	3.33	1200	3800	6.53	2.80	1200	3800	5.30	2.27	1200	3800	4.27	1.73	1200	3800	3.07	1.07	1200	3800
	1/1000	6.16	3.016	1200	3800	5.35	2.513	1200	3800	4.47	2.011	1200	3800	3.51	1.508	1200	3800	2.51	1.005	1200	3800
	1/1200	5.98	2.513	1200	3800	5.24	2.095	1200	3800	4.30	1.676	1200	3800	3.40	1.257	1200	3800	2.50	0.838	1200	3800
	1/1500	4.79	2.011	1200	3800	4.09	1.676	1200	3800	3.44	1.341	1200	3800	2.72	1.005	1200	3800	1.97	0.670	1200	3800
	1/1800	4.30	1.676	1200	3800	3.66	1.391	1200	3800	3.07	1.106	1200	3800	2.47	0.838	1200	3800	1.84	0.553	1200	3800
	1/2400	3.70	1.257	1200	3800	3.17	1.047	1200	3800	2.70	0.838	1200	3800	2.17	0.629	1200	3800	1.61	0.419	1200	3800
1/3000	2.65	1.005	1200	3800	2.27	0.838	1200	3800	1.97	0.670	1200	3800	1.57	0.503	1200	3800	1.12	0.335	1200	3800	
1/3600	2.62	0.838	1200	3800	2.25	0.697	1200	3800	1.91	0.553	1200	3800	1.55	0.419	1200	3800	1.12	0.285	1200	3800	

HP₁: 輸入馬力 Input HP. HP₂: 輸出馬力 Output HP.
O.T.: 輸出扭矩 Output Torque (kg-m). O.H.L.: 懸垂荷重 Overhung Load (kgf).

特性表-入力直結型 Ratings for quill input shaft

規格 Size	速比 Ratio	單段蝸輪 Single Reduction								輸入轉速 Input rpm	雙段蝸輪 Double Reduction								
		1800 RPM				1500 RPM					1800 RPM				1500 RPM				
Size	Ratio	HP ₁	HP ₂	RATIO	O.H.L	HP ₁	HP ₂	O.T	O.H.L	Size	Ratio	HP ₁	HP ₂	RATIO	O.H.L	HP ₁	HP ₂	O.T	O.H.L
50	1/10	0.25	0.19	0.79	100	0.25	0.19	0.93	107	80	1/200	0.25	0.12	9.72	400	0.25	0.11	11.30	400
	1/15	0.25	0.19	1.13	115	0.25	0.17	1.33	115		1/300	0.25	0.11	13.50	400	0.25	0.09	15.59	400
	1/20	0.25	0.16	1.39	115	0.25	0.16	1.64	115		1/400	0.25	0.09	16.15	400	0.25	0.08	18.72	

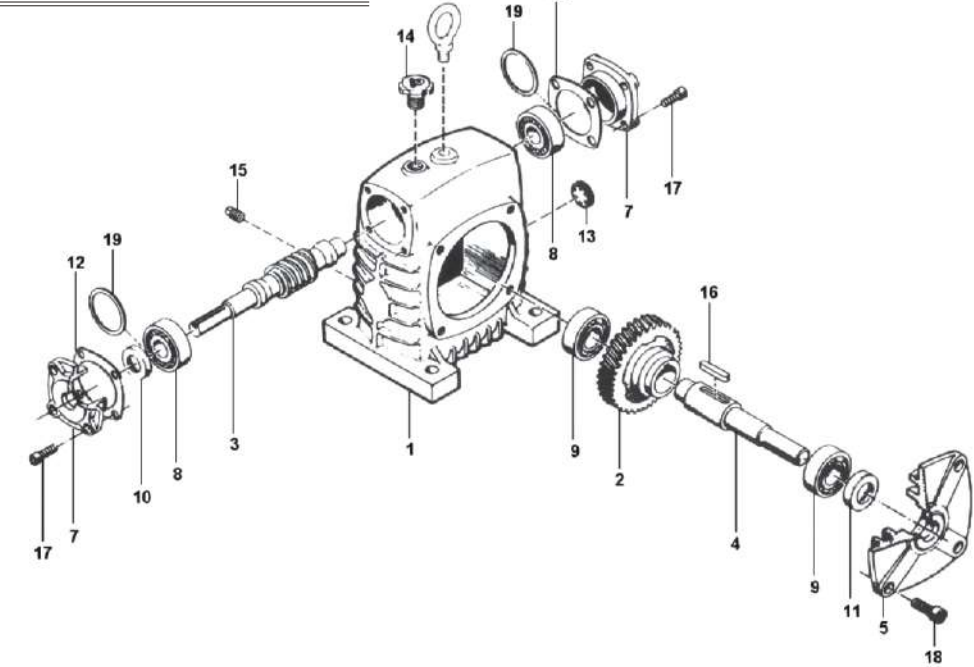
零件規格 Parts Specification

實心入力軸 Input Shaft					實心出力軸 Output Shaft				
規格 Size	入力軸承 Bearing	入力軸油封 Input oil seal	入力軸鍵 Input Key	小蓋螺絲 Bolt	規格 Size	出力軸承 Bearing	出力軸油封 Output oil seal	出力軸鍵 Output Key	大蓋螺絲 Bolt
40	6203x2	TC17x30x7	4x4x25L	M6x16L	40	6203x2	TC17X30X7	5x5x30L	M6x16L
50	6203x2	SC17x30x7	4x4x25L	M6x16L	50	6204x2	TC20X35X7	5x5x35L	M8x16L
60	30204x2	Sc20x35x7	5x5x35L	M6x16L	60 (TKJ)	6205x2 (6206x2)	TC25X40X7 (TC30X50X8)	7x7x45L	M8x16L
70	30205x2	SC25x40x7	5x5x35L	M8x20L	70	6206x2	TC30X50X11	7x7x55L	M10x20L
80	30206x2	SC30x50x11	7x7x45L	M8x20L	80	6207x2	TC35X55X11	10x8x60L	M10x20L
100	30207x2	SC35x55x8	7x7x45L	M10x25L	100	6208x2	TC40X62X12	10x8x60L	M12x25L
120	30308x2	TC40x62x12	7x7x55L	M10x25L	120	6210x2	TC50X80X12	12x8x70L	M14x25L
135	30309x2	TC45x68x12	10x8x60L	M12x30L	135	6212x2	TC60X82X12	15x10x80L	M14x30L
155	30309x2	TC45x68x12	10x8x60L	M14x35L	155	32213x2	TC65X95X13	15x10x100L	M14x35L
175	30311x2	SC55x80x13	12x8x70L	M14x40L	175	32214x2	TC70X100X13	18x11x100L	M16x40L
200	30312x2	TC60x82x12	12x8x90L	M16x40L	200	32215x2	TC75X105X13	20x12x115L	M14x40L
225	30312x2	TC60x82x12	15x10x90L	M16x40L	225	32217x2	TC85X120X12	20x12x115L	M14x40L
250	30313x2	Tc65x95x14	15x10x100L	M16x50L	250	32219x2	TC95X135X13	24x16x150L	M16x50L
300	32216x2 NJ316x1 30316x2	Tc80x105x13	18x11x110L	M14x40L	300	32220x2	TC100X125X13	28x16x160L	M16x50L
350	32218x2 NJ318x1 30318x2	Tc90x120x13	20x12x130L	M18x50L	350	32224x2	TC120X150X13	32x18x180L	M20x50L

直結型入力軸 Quill Input Shaft					中空型出力軸 Hollow Output Shaft			
規格 Size	軸承 Bearing	油封 Oil seal	螺絲 Screw	馬力 Power	規格 Size	軸承 Bearing	油封 Oil seal	螺絲 Screw
40	5203 x1	SC 25x35x7	M6x16L	0.25HP,0.5HP	40	6006 x2	TC 30X50X8	M6x16L
50	5203 x1	SC 25x35x7	M6x16L	0.25HP,0.5HP	50	6008 x2	TC 40X52X7	M8x16L
60	6204x1/6005x1 5204x1	SC 25x35x7 SC 30x45x7	M6x16L	0.25HP,0.5HP 1 HP	60	6009 x2	TC 45X60X7	M8x16L
70	6204ZZx2 6004ZZx2	SC 35x50x7	M8x20L	0.5HP 1HP,2HP	70	6010 x2	TC 50X72X12	M10x20L
80	6205ZZx2	TC 40x50x8	M8x20L	1HP, 2HP	80	6011 x2	TC 55X80X12	M10x20L
100	6206ZZx2	SC 50x60x8	M10x25L	2HP,3HP	100	6012 x2	TC 60X82X12	M12x25L
120	30210 x2	SC 50x60x7	M10x25L	2HP,3HP	120	6014 x2	TC 70X100X13	M14x25L
135	30309 x2 6211x1/6013x1	TC 45x68x12 TC 65x82x10	M12x30L	3HP,5HP 7.5HP	135	6017 x2	TC 85X120X12	M14x30L
155	6211x1/6013x1	TC65x82x10	M14x35L	7.5HP/10HP	155	6020 x2	TC100X125X13	M10x30L M14x35L
175	30311x1 32213x1	Tc65x95x14	M14x40L	7.5HP/10HP	175	6022 x2	TC110X140X14	M10x30L M16x40L

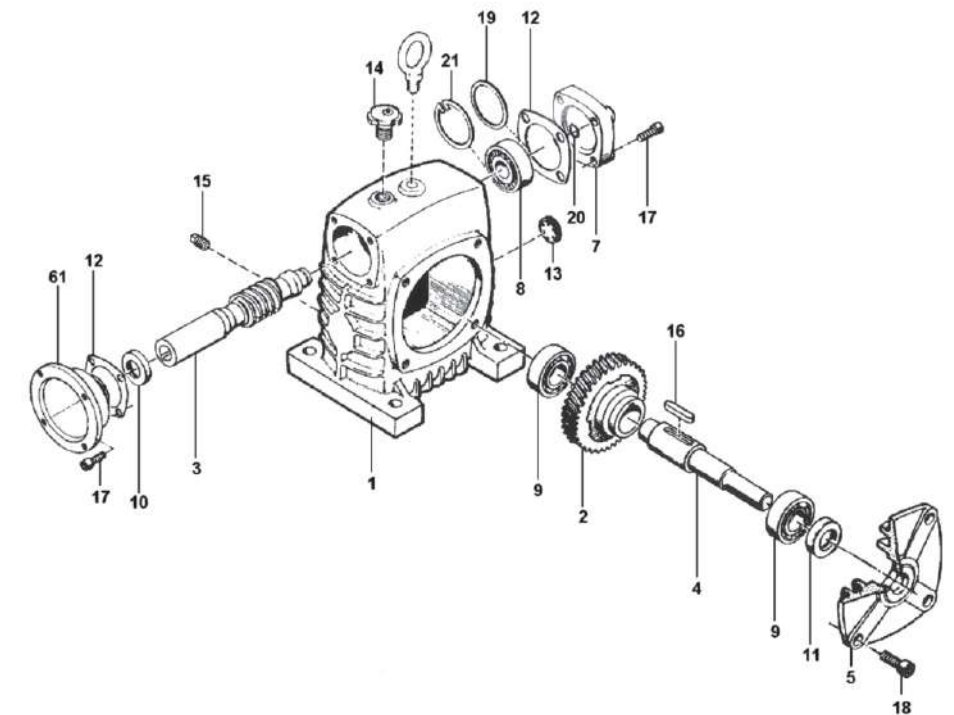
單段蝸輪減速機分解圖 Single Reduction spare parts

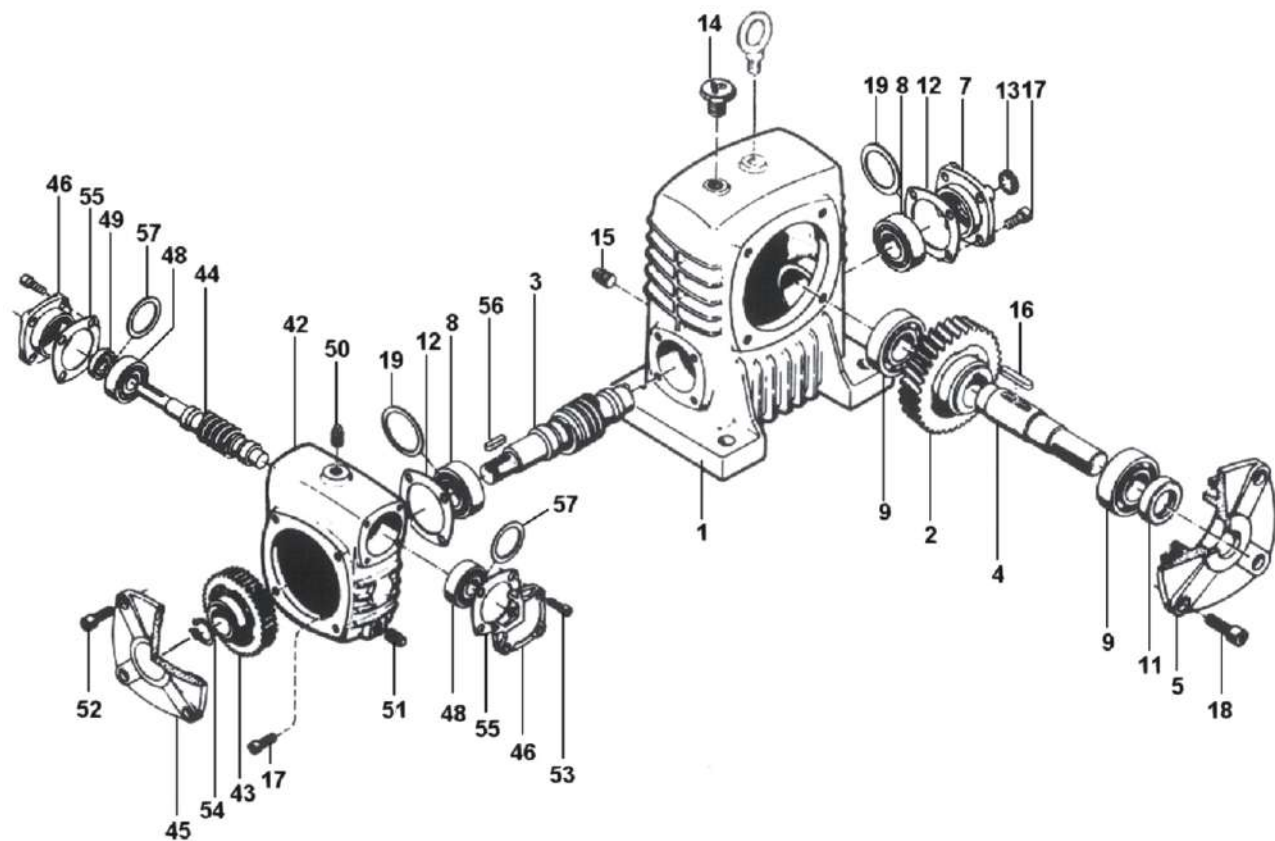
入力/出力實心軸 Input & Output solid shaft



No	零件 Parts	No	零件 Parts	No	零件 Parts
1	TK本體 TK Housing	8	入力軸承 Bearing input	16	鍵 key
1-1	BH本體 BH Housing	9	出力軸承 Bearing output	17	入力蓋螺栓 bolt
2	蝸輪 Worm wheel	10	入力油封 Oil seal input	18	出力蓋螺栓 bolt
3	入力軸 Worm shaft	11	出力油封 Oil seal output	19	填隙片 Shim
4	出力軸 Output shaft	12	墊片 Gasket	20	扣環 Snap ring
5	出力軸蓋 Output shaft cover	13	油鏡 Oil guage	21	扣環 Snap ring
6	吊環 Eye bolt	14	透氣塞 Breather	61	入力法蘭 Flange
7	入力軸蓋 Input shaft cover	15	洩油栓 Drain plug		

入力直結/出力實心軸 Quill Input shaft & Output solid shaft





No	零件 Parts	No	零件 Parts	No	零件 Parts
1	本體 Housing-secondary	13	油鏡 Oil guage	46	入力軸蓋 Input shaft cover
2	蝸輪 Worm wheel	14	透氣塞 Breather	48	入力軸承 Bearing-input
3	入力軸 Worm shaft	15	洩油栓 Drain plug	49	入力油封 Oil seal-input
4	出力軸 Output shaft	16	鍵 key-worm wheel	50	透氣塞 Breather
5	出力軸蓋 Output cover	17	入力蓋螺栓 Bolt-input cover	51	洩油栓 Drain plug
6	吊環 Eye bolt	18	出力蓋螺栓 Bolt-output cover	52	螺栓 Bolt
7	入力軸蓋 Input cover	19	填隙片 Shim	53	螺栓 Bolt
8	軸承 Bearing	42	本體 Housing-primary	54	扣環 Snap ring
9	出力軸承 Bearing-output	43	蝸輪 Worm wheel	55	墊片 Packing
11	出力油封 Oil seal-output	44	入力軸 Worm shaft	56	鍵 key
12	墊片 Gasket	45	出力軸蓋 Output shaft cover	57	填隙片 Shim

AK 鋁合金蝸輪減速機 AK ALUMINUM WORM GEAR REDUCER	TK 蝸輪減速機 TK WORM GEAR REDUCER	BH 蝸輪減速機 BH WORM GEAR REDUCER
G300 齒輪減速機 G300 HELICAL GEARMOTOR	G700 齒輪減速機 G700 HELICAL GEARMOTOR	RM 乘數型齒輪減速機 RATIO MULTIPLIERS
WATT 進口減速機 WATT IMPORT REDUCER(AUSTRIA)	SDW 尋光器 SLEWING DRIVE	ZHP 電動輪椅減速機 ELECTRIC WHEELCHAIR REDUCER

墊基磐石 FOUNDATION STONE	公司/廠房外觀 FACTORY
蝸桿研磨機 WORM GRINDING MACHAINE	負載測試 LOAD TESTING MACHINE
零件倉儲 PARTS WAREHOUSE	成品組裝 ASSEMBLY LINE