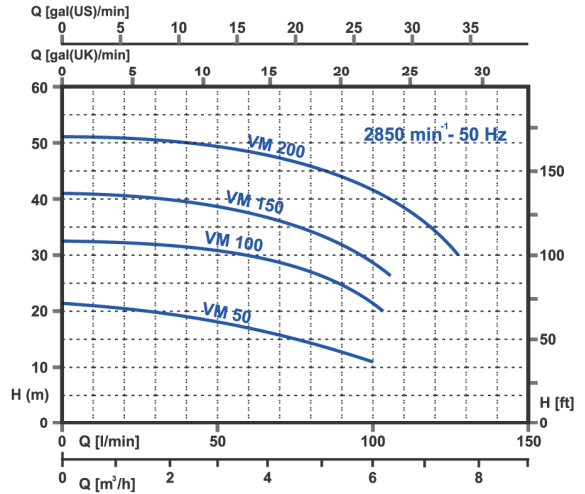
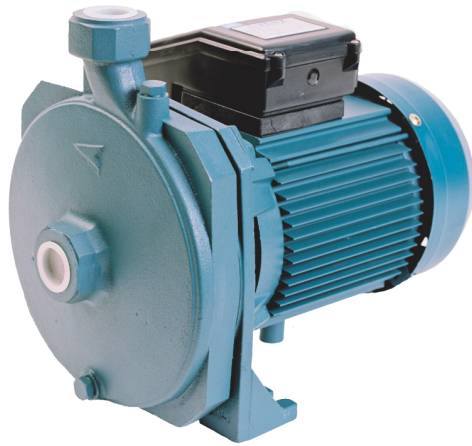
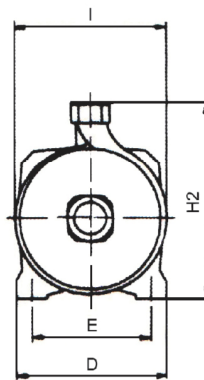
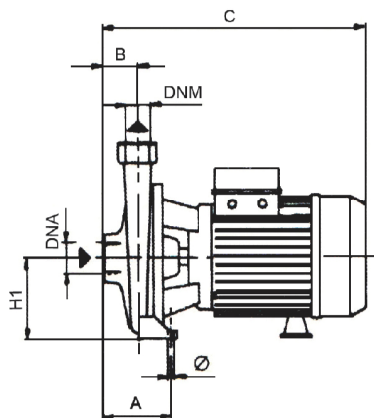




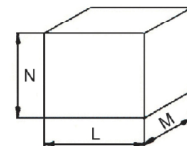
Series VM
SINGLE IMPELLER CENTRIFUGAL ELECTRIC PUMPS



TYPE - MODEL		Nominal Power		Input Power		I (A)		Capacity (m³/h - l/min)														DNA	DNM	ราคา			
1~ Singlephase	3~ Threephase	kW	HP	1~	3~	1x230V 50Hz	3x400V 50Hz	0.6	1.2	1.8	2.7	3.6	4.5	5.4	6.3	7.2	8.4	12	15	18							
								Total head (m)																			
VM 50	VM 50 T	0.37	0.50	0.59	0.65	2.80	1.1	21.5	20	18	17	15	12												1"G	1"G	
VM 50 **	VM 50 T	0.37	0.50	0.59	0.65	2.80	1.1	21.5	20	18	17	15	12												1"G	1"G	
VM 100	VM 100 T	0.74	1.00	1.16	1.17	5.70	2	33	32.5	32	31	29	28	25	21										1"G	1"G	
VM 100 **	VM 100 T	0.74	1.00	1.16	1.17	5.70	2	33	32.5	32	31	29	28	25	21										1"G	1"G	
VM 150	VM 150 T	1.10	1.50	1.85	1.85	8.80	3.4	40.5	40	39.5	38	37.5	34.5	32	27.5										1"G	1"G*	
VM 200	VM 200 T	1.65	2.20	2.22	2.30	10.30	4.2	50.5	50	49	48	46	44.5	42	39	35									1"G	1"G*	



* Option DNA x DNM 1 1/4 x 1"
** ใบพัด Noryl



TYPE	DIMENSION (mm.)												PACKING (mm.)			Weight Kg.
	A	B	C	D	E	I	Ø	H1	H2	DNA	DNM	N	L	M		
VM 50	75	45	270	160	110	165	9.5	82	203	1"G	1"G	240	280	180	8.6	
VM 100	82	45	305	180	140	188	9.5	97	232	1"G	1"G	270	320	210	15.9	
VM 150	86	46	345	195	180	196	9.5	105	257	1"G	1"G*	280	360	240	19.5	
VM 200	95	48	345	230	180	230	9.5	120	290	1"G	1"G*	305	360	240	23.3	

Cast iron pump body , Cast iron pump bracket , Brass impeller or noryl on request , stainless steel shaft or mind steel , Max temperature of pumped liquid 50 °C for noryl and 90 °C for Brass , max working pressure 8 bar for , Carbon/ceramic Mechanical Seal , Motor T.E.F.C 2 poles Insulation Class F Protection IP 55 or IP 44